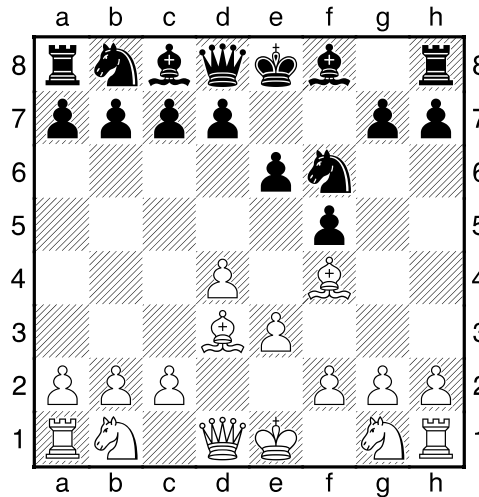


(108) Wesley,Carmans - Theo,Verstappen [A80]

intern GESS, 02.03.2020
[Deep Fritz 14 x64 (15m)]

[A80: Hollandse Verdediging: Ongebruikelijke Wit tweede zetten]

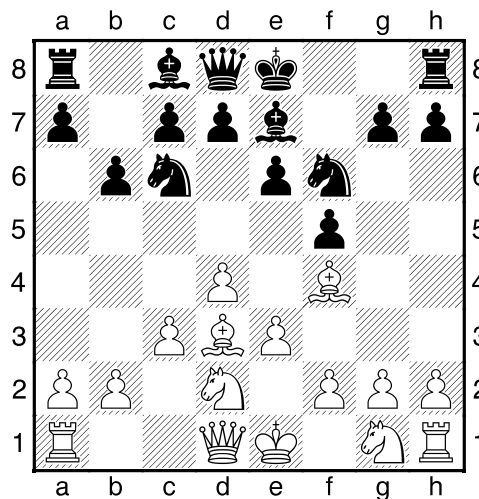
1.d4 f5 2.Lf4 Pf6 3.e3 e6 4.Ld3 [Diagram



laatste zet uit boek]

4...Le7 5.Pd2 Pc6 6.e3 [Controleert b4]

6...b6 [Diagram



]

7.e4 [Wit dreigt met materiaalwinst: e4xf5]

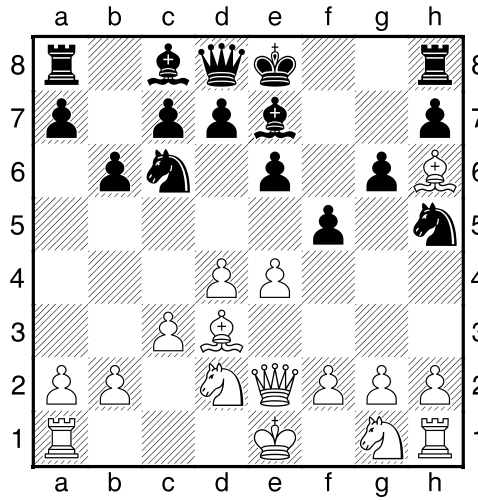
7...g6 [Zwart's positie is in het nauw]

[7...Lb7 8.Ph3=]

8.De2 [8.Pgf3 Ph5 9.Lh6 Lf8 10.Lxf8 Txf8?]

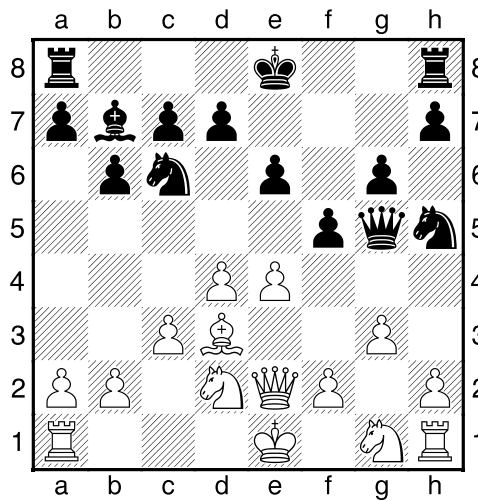
8...Ph5 [Zwart dreigt met materiaalwinst: Ph5xf4]

9.Lh6 [Diagram]

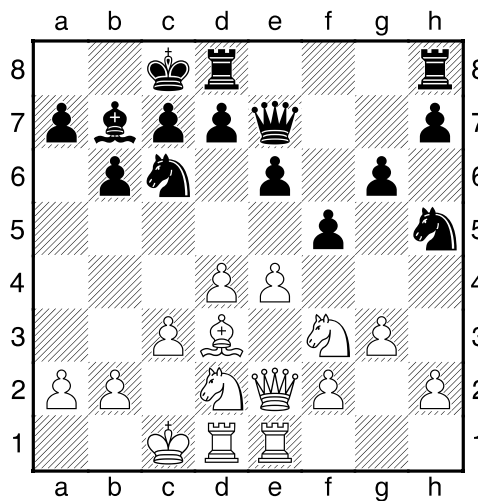


9...Lg5 10.Lxg5 Dxc5 11.g3 [Beheerst f4]

[Diagram]



12.Pg3 De7 13.0-0 0-0 14.The1 [Diagram]

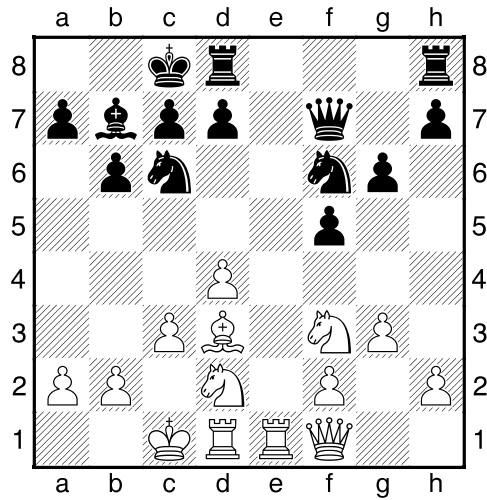


]

14...Pf6 [14...fxe4 15.Pxe4 Pf6 16.Kb1=]

15.Df1 [15.exf5!? gxf5 16.Lxf5±]

15...Df7 16.exf5 exf5 [Diagram



]

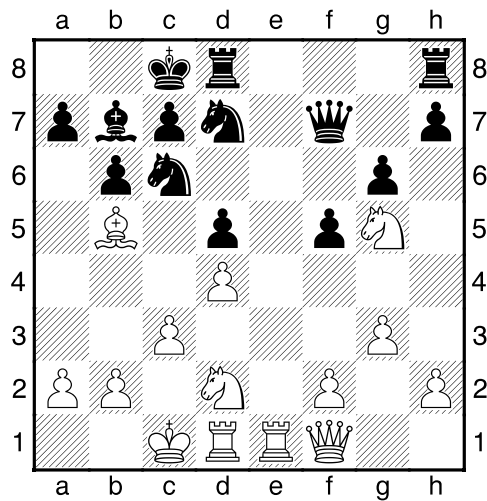
17.Lc4 [Wit dreigt met materiaalwinst: Lc4xf7]

17...d5 [Zwart dreigt met materiaalwinst: d5xc4]

[17...Dg7 18.Kb1=]

18.Lb5² Pd7 [18...Pe4 19.Lxc6 Lxc6 20.Pe5²]

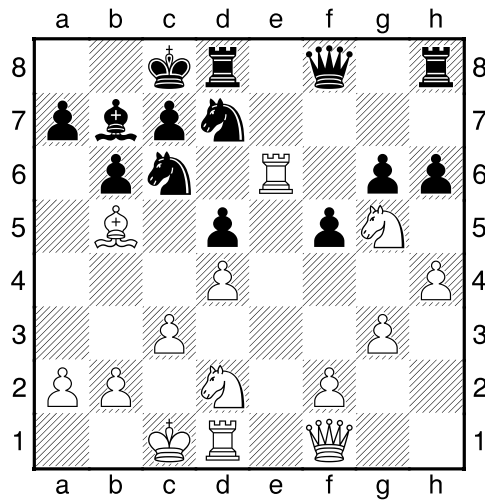
19.Pg5± [Diagram



]

19...Df6 20.h4 h6 [20...Pf8!?? Moet overwogen worden.]

21. Te6± Df8 [Diagram



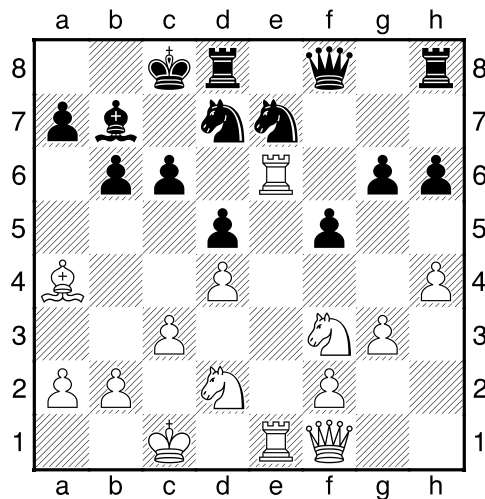
]

[21...Dg7 22.Ph3 Pcb8 23.Tde1±]

22. Pgf3+- Pe7 [22...Pdb8 23.Txg6 Df7 24.h5+-]

23. Tde1 c6 [23...Th7 24.De2 Pg8 25.Lxd7+ Kxd7 26.Pe5+ Kc8 27.Pxg6+-]

24. La4 [Diagram

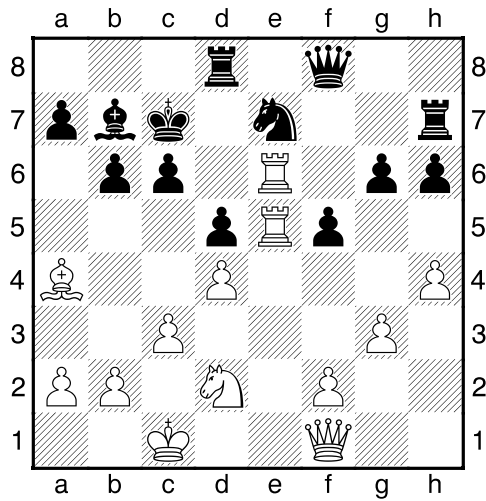


]

[24.Txe7!? Dit maakt het voor wit nog eenvoudiger. 24...cxb5 25.Dxb5 f4+-]

24...Th7 25.Pe5 [25.De2 Te8+-]

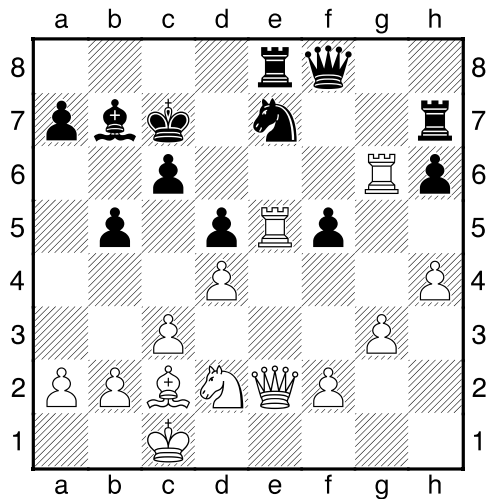
25...Pxe5± 26.T1xe5 Kc7 [Diagram



27.De2 Te8 28.Txg6! [Deflectie: e7]

28...b5 [28...Pxc6 29.Te6 Lokaas Dubbele aanval (29.Txe8 Vrijmaken Deflectie Penning)]

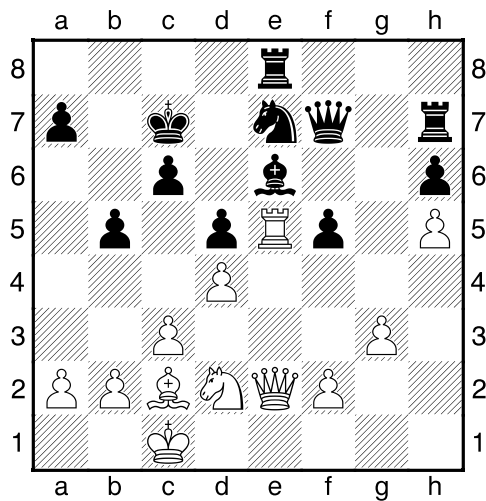
29.Lc2 [Diagram



29...Df7? [!29...Lc8 30.Pb3 Ld7+~]

30.h5 Lc8 31.Tge6 [!31.De3!? Df8 32.Df4+~]

31...Lxe6± [Diagram



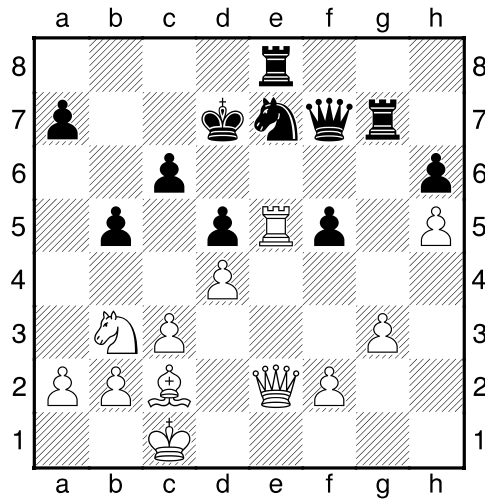
]

32.Txe6 Kd7? [32...Kd8 33.Pb3 Pc8 34.Pc5 Txe6 35.Pxe6+ Kd7 36.Pc5+ Kc7 37.De5+ Pd6 38.Lxf5 Dxf5 39.Pe6+ Kb6 40.Dxd6±]

33.Te5 [33.Pb3!? Leidt nog sneller tot winst. 33...Kc7+--]

33...Tg7 [33...Kc7 34.Pb3±]

34.Pb3+-- [Diagram



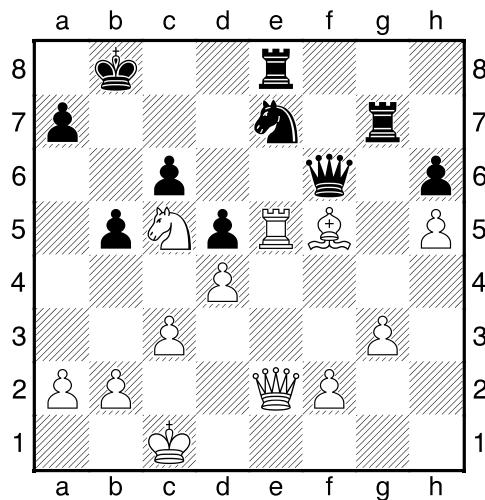
]

34...Df6? [!34...Tg5 35.Pc5+ Kc8+--]

35.Pc5+ Kc8 [35...Kc7 Een laatste poging om het onvermijdelijke te ontlopen. 36.Pe6+ Kd7 37.Pxg7 Dxc7 38.Lxf5+ Kd8+--]

36.Lxf5+! [Deflectie: e7]

36...Kb8 [Diagram



]

[36...Pxf5 37.Txe8+ Deflectie Penning]

37.Pd7+ [37.Pd7+ Kb7 38.Pxf6 Pxf5 39.Pxe8+–]

1–0