

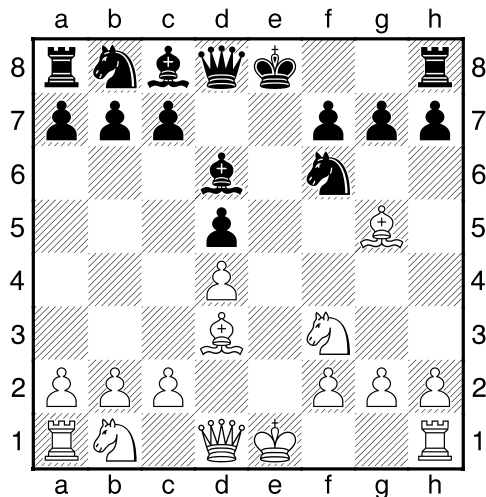
**(9) Tom,du Chatinier - Theo,Verstappen [C01]**

KaLe beker GESS, 19.12.2017

[Deep Fritz 14 x64 (15m)]

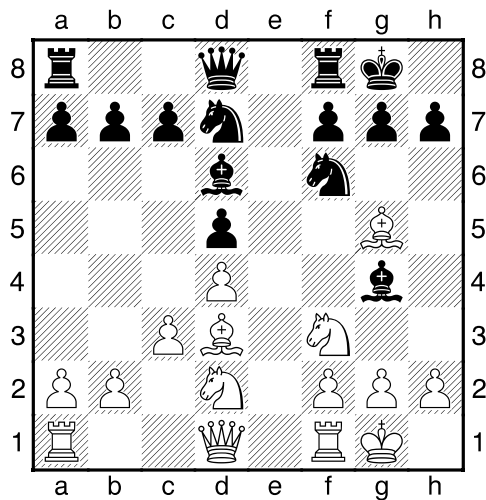
[C01: Frans: Ruil Variant]

1.e4 e6 2.Pf3 d5 3.exd5 exd5 4.d4 Pf6 5.Ld3 Ld6 6.Lg5 [Diagram



]

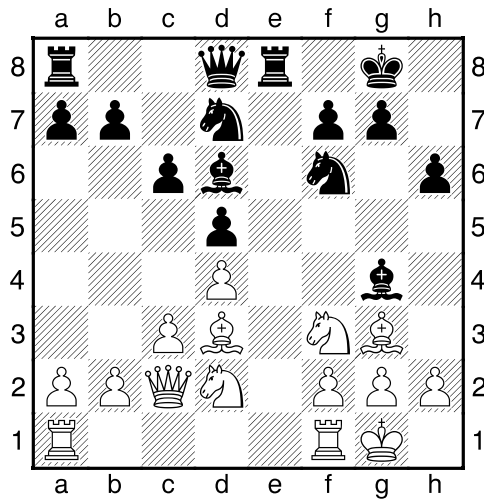
6...0-0 7.0-0 Lg4 8.Pbd2 Pbd7 9.c3 [Diagram



]

9...Te8 10.Dc2 h6 11.Lh4 c6 [laatste zet uit boek]

12.Lg3 [Diagram



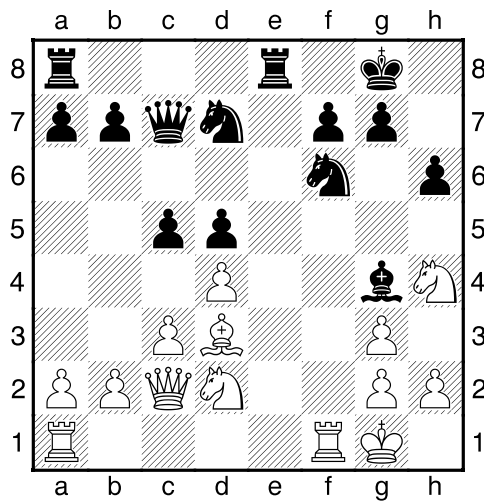
]

[12.h3 Lxf3 13.Pxf3 Da5=]

12...Lxg3<sup>3</sup> 13.fxg3 [Wit heeft nieuwe dubbele pionnen: g2+g3]

13...Dc7 14.Ph4 [14.Tae1 c5=]

14...c5 [Diagram



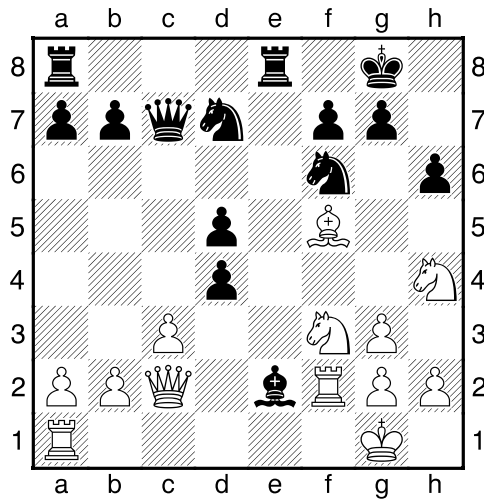
]

15.Lf5 [15.Tae1 Db6 16.Pdf3 cxd4 17.cxd4 Tac8μ]

15...cxd4μ 16.Tf2? [16.cxd4 Db6 17.Pdf3 Pe5μ]

16...Le2 [16...Tac8!? 17.Tb1-+]

17.Pdf3 [Diagram



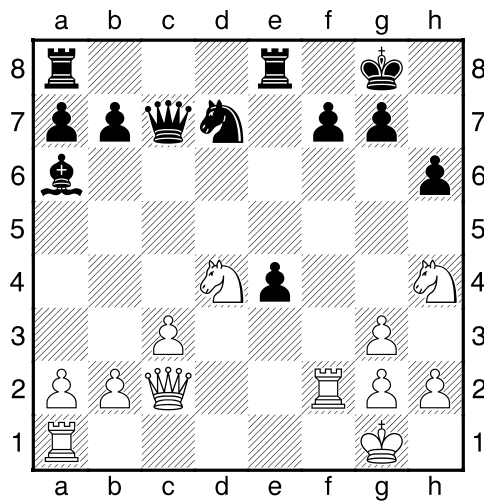
]

[17.Pb3 d3 18.Lxd3 Lxd3 19.Dxd3 a5μ]

**17...La6** [17...Lxf3!? 18.gxf3 dxc3→+]

**18.Pxd4** [Het paard is volgens mij veilig op d4.]

**18...Pe4 19.Lxe4 dxe4** [Diagram



Zwart heeft een nieuwe gepasseerde pion: e4.]

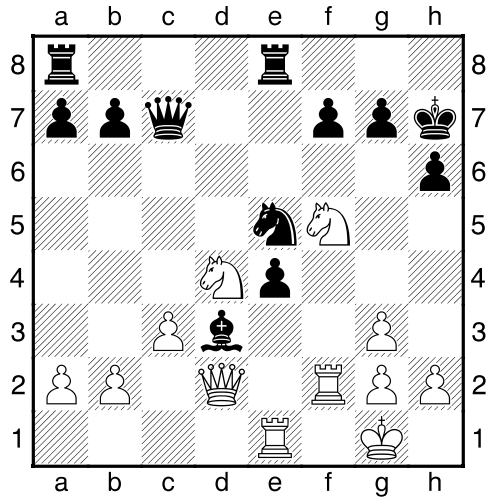
**20.Te1** [20.Phf5 Tad8³]

**20...Ld3** [Zwart dreigt met materiaalwinst: Ld3xc2]

[20...Pc5!? 21.Te3 g6μ]

**21.Dd2**³ [Zwart heeft een actieve stelling]

**21...Pe5 22.Phf5 Kh7** [Diagram

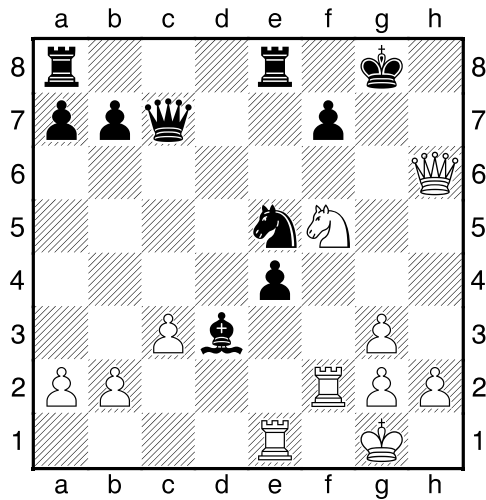


]

[22...Db6 23.Dd1<sup>3</sup>]

23.Pxg7= Kxg7?? [<sup>1</sup>23...e3 Is de beste kans. 24.Txe3 Kxg7 25.Txd3 Pxd3 26.Dxd3 Te1+ 27.Tf1 Txf1+ 28.Dxf1 De5=]

24.Pf5+- Kg8 25.Dxh6 [Diagram

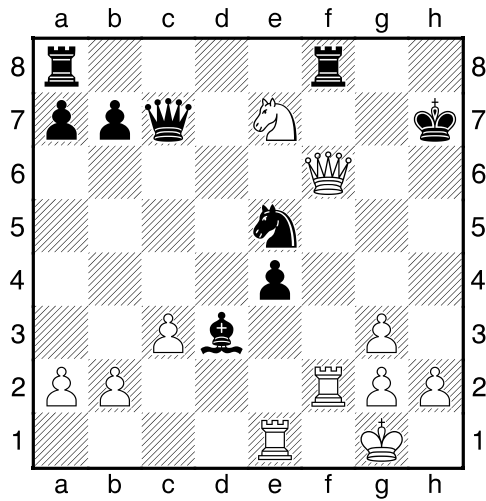


]

25...f6 26.Dxf6 Tf8 [26...a5 27.Dg5+ Kh8 28.g4 Pxg4 29.Dxg4+-]

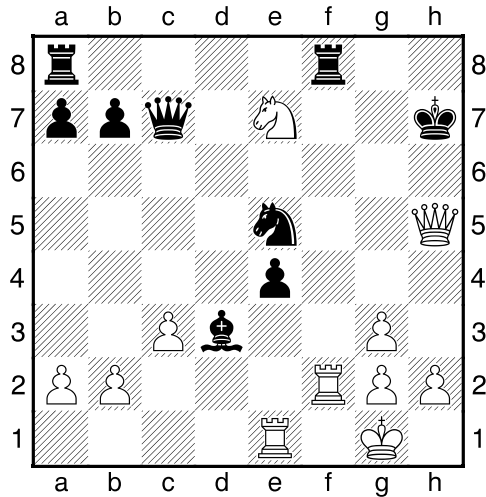
27.Pe7+ [27.Dg5+!? Levert nog groter voordeel op. 27...Kh8 28.Tf4 Tf7 29.Th4+ Th7 30.Txh7+ Kxh7+-]

27...Kh7 [Diagram



]

28.Dh4+ Kg7 29.Dg5+ Kh7 30.Dh5+ [Diagram



]

[30.Pf5!? Txf5 31.Txf5 Pf7+--]

30...Kg7±

½-½