

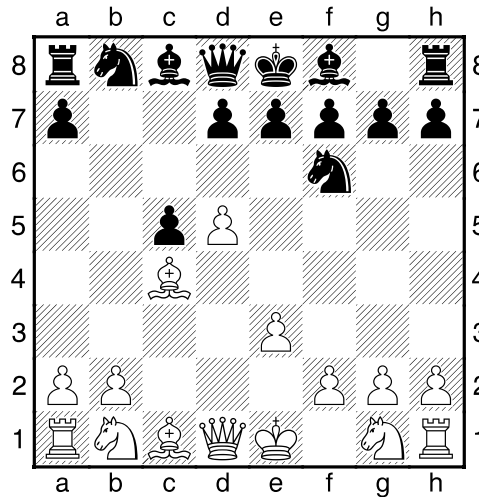
(62) Theo,Verstappen - Mark,van Dijk [A57]

Extern GESS-Heerlen, 17.02.2019

[Deep Fritz 14 x64 (15m)]

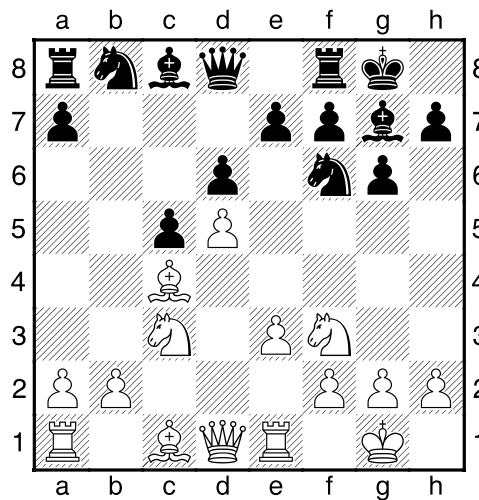
[A57: Benko/Volga Gambiet]

1.c4 Pf6 2.d4 c5 3.d5 b5 4.e3 bxc4 5.Lxc4 [Diagram



laatste zet uit boek]

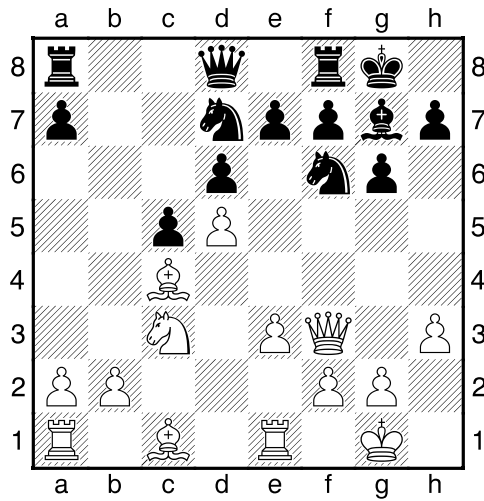
5...g6 6.Pc3 d6 7.Pf3 Lg7 8.0-0 0-0 9.Te1 [Diagram



]

9...Lg4 10.h3 Lxf3 11.Dxf3 [Wit heeft een loperpaar]

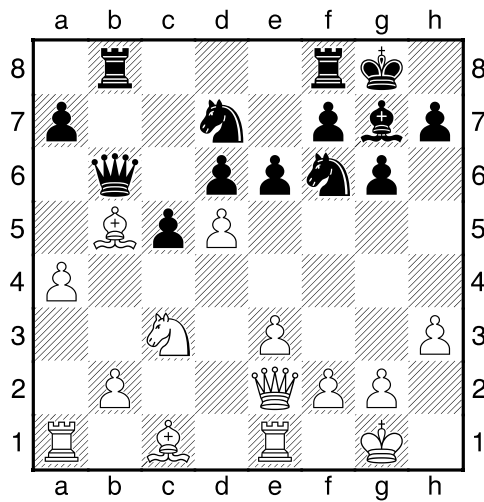
11...Pbd7 [Diagram



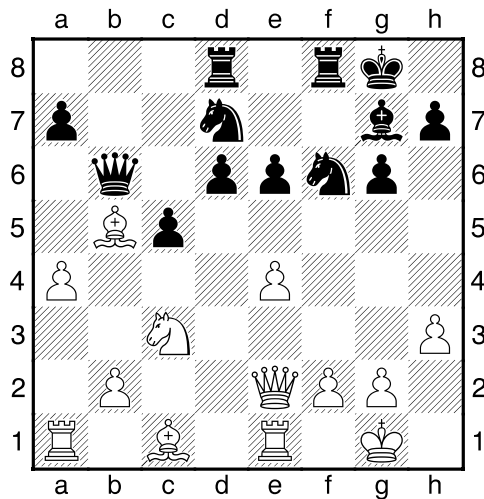
]

12.Lb5 Tb8 13.a4 [Wit heeft een nieuwe achtergelegen pion: b2]

13...Db6 14.De2 e6 [Diagram



15.dxe6 fxe6 16.e4 Tbd8 [Diagram



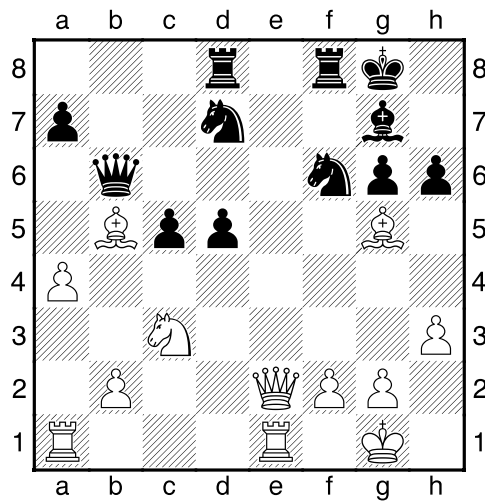
Zwart's positie is in het nauw]

[16...Pe5 17.Td1=]

17.Le3 d5 [17...Pe5 18.Tac1²]

18.exd5± exd5 [Zwart heeft een nieuwe gepasseerde pion: d5.]

19.Lg5 h6?? [Diagram



]

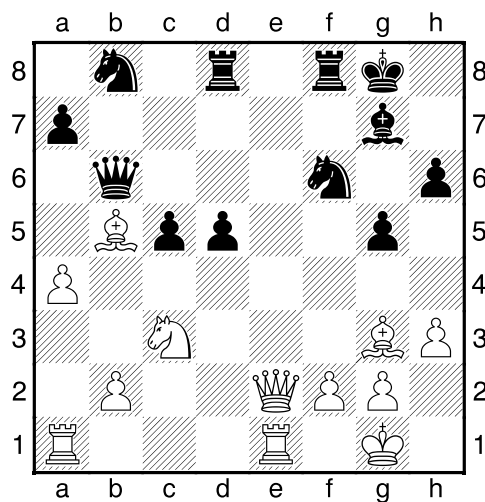
[19...Kh8 20.a5 Db8 21.Lh4²]

20.Lh4?? [Nu is de tegenstander weer terug in het spel.]

[!20.Pxd5 Is de snelste weg. 20...Pxd5 21.Lxd8 Txd8 22.Lxd7+~]

20...g5± [Zwart dreigt met materiaalwinst: g5xh4]

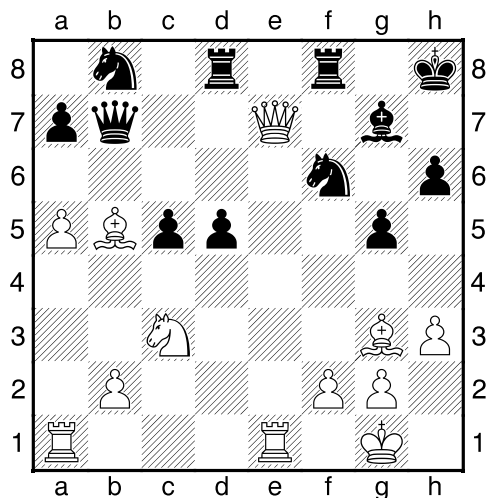
21.Lg3 Pb8 [Diagram



]

[!21...Db7!?!? Ziet er goed uit.]

22.a5+- Db7 23.De6+ Kh8 24.De7 [Diagram



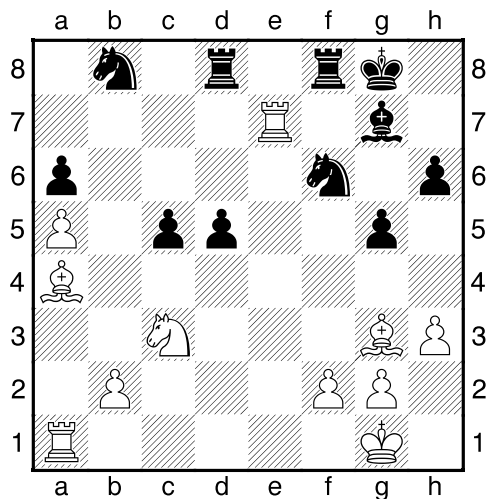
]

[24.a6!? Df7±]

24...Dxe7 25.Txe7 a6 26.La4 [Wit heeft een zeer actieve stelling]

[26.Lf1±]

26...Kg8 [Diagram



]

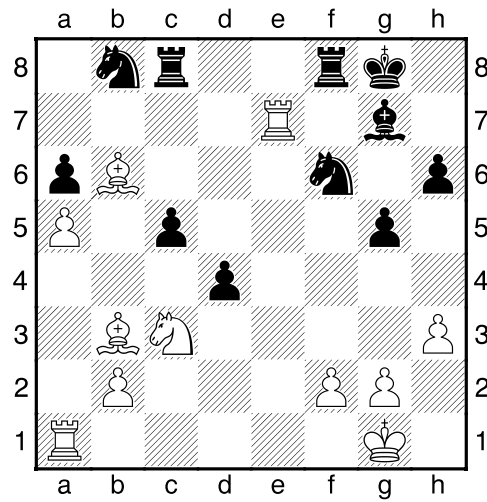
[26...d4 27.Pe4 Pxe4 28.Txe4²]

27.Lc7 [Wit dreigt met materiaalwinst: Lc7xd8]

[27.Tae1!?!±]

27...Tc8 [Zwart's positie is in het nauw. Wit kan zijn stukken niet verzetten: b8]

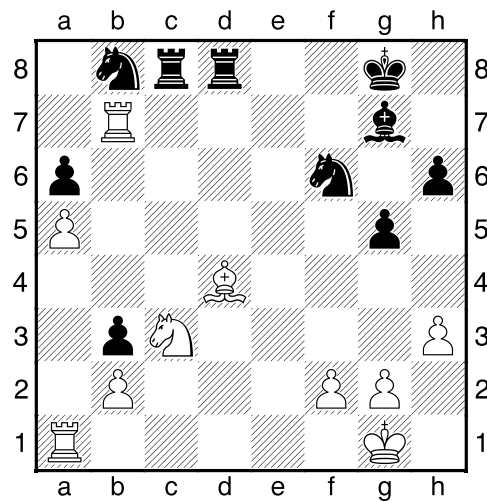
28.Lb6 d4 29.Lb3+?? [Diagram



Geeft de tegenstander nieuwe kansen.]

[!29.Pe4 Pxe4 30.Txe4±]

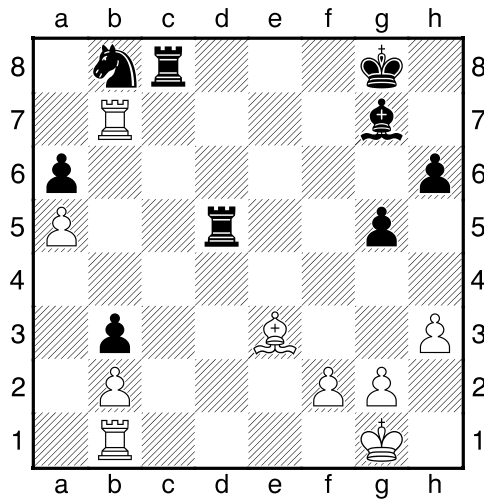
29...c4→ 30.Lxd4 cxb3 31.Tb7 Tfd8 [Diagram



]

32.Lb6? [!32.Lxf6 Lxf6 33.Txb3→]

32...Td2 33.Tb1 Pd5 34.Pxd5 Txd5 35.Le3 [Diagram

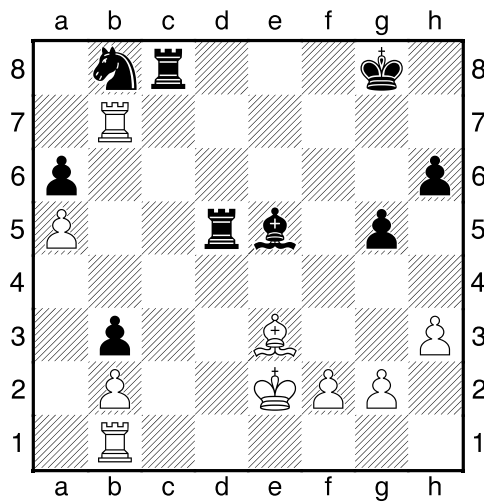


]

35...Td3 36.Kf1 [36.Tb6 Pc6 37.Txa6 Td5-+]

36...Le5 [!36...Pc6 En zwart haalt de buit binnen. 37.Lb6-+]

37.Ke2 Td5 [Diagram

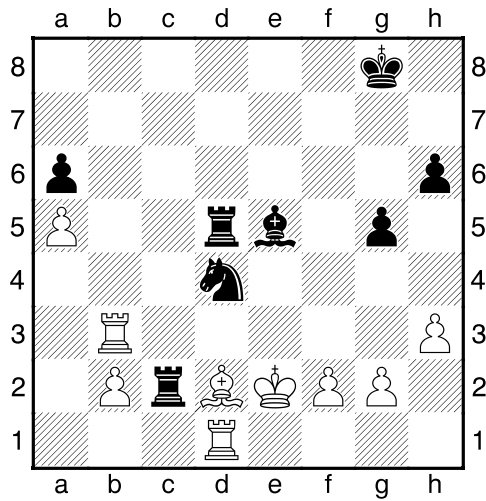


]

38.Ld2 [38.Txb3 Txa5 39.Td1-+]

38...Tc2 39.Td1 Pc6 40.Txb3 [40.Ke1 Dit verbetert nauwelijks iets aan de stelling. 40...Txb2 41.Tb6 Tbx d2 42.Txd2 Lc3 43.Txb3 Lxd2+ 44.Kf1 Lxa5-+]

40...Pd4+ [Diagram

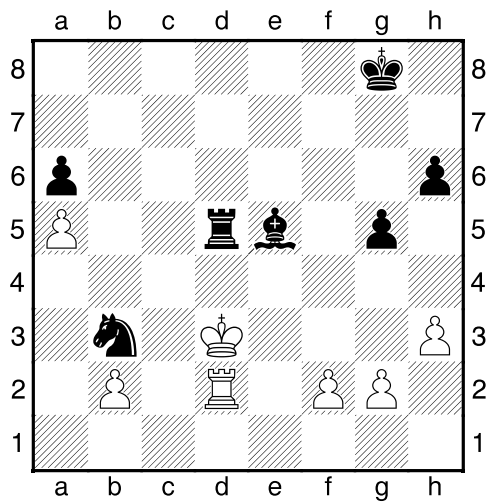


]

41.Kd3 Txd2+! [Lokaas: e3]

42.Txd2 [42.Txd2 Pxb3+ Tussenzet; 42.Kxd2 Lf4+ Lokaas Dubbele aanval (42...Pxb3+ Tussenzet)]

42...Pxb3+ [Diagram



]

[42...Pxb3+ 43.Ke4 Txd2 44.Kxe5 Txf2--]

0-1