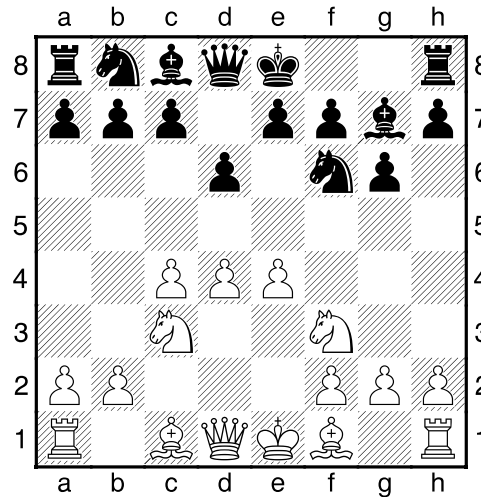


**(103) Theo,Verstappen - Rene,Mussen [E90]**

Intern GESS, 03.02.2020  
[Deep Fritz 14 x64 (15m)]

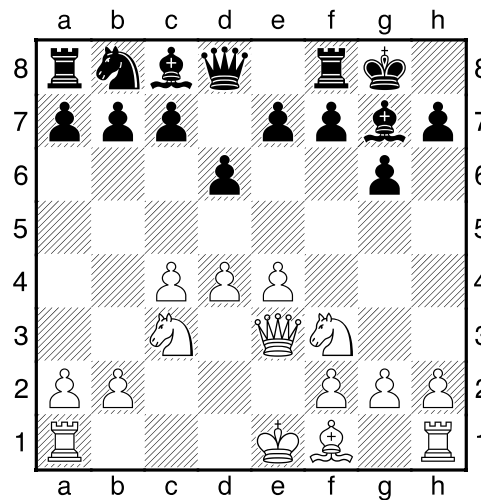
[E90: Konings-Indisch: Klassiek: Vroege afwijkingen en 6 h3]

1.c4 Pf6 2.d4 g6 3.Pc3 Lg7 4.e4 d6 5.Pf3 [Diagram



]

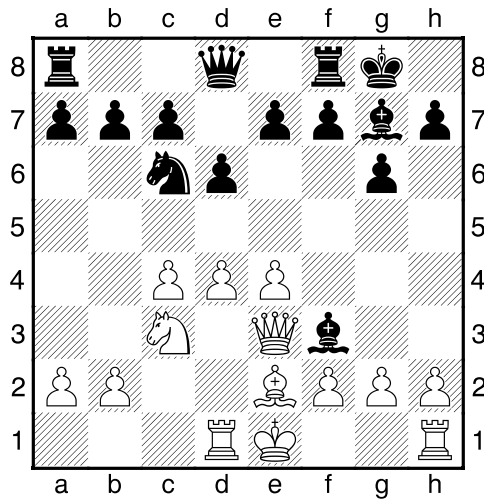
5...0-0 6.Le3 Pg4 7.Dd2 Pxe3 8.Dxe3 [Diagram



laatste zet uit boek. Zwart heeft een loperpaar]

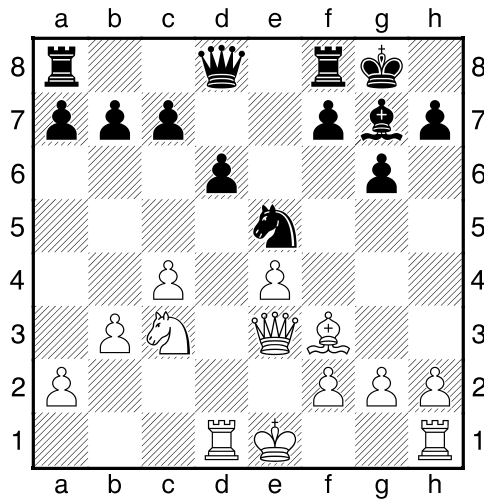
8...Pc6 9.Td1 [Zwart's positie is in het nauw]

9...Lg4 10.Le2 Lxf3 [Diagram



]

11.Lxf3 e5 12.dxe5 Pxe5 13.b3 [Diagram



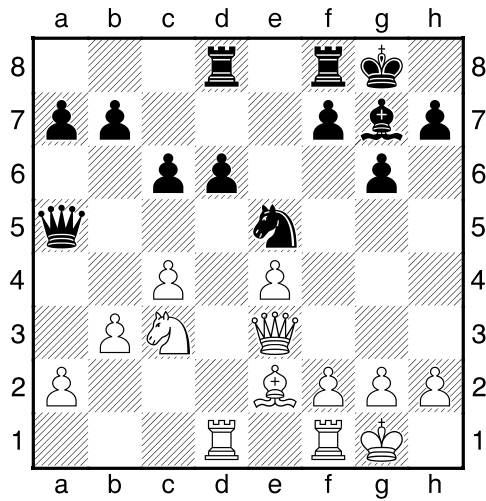
Beheerst c4]

[13.c5 Pc4 14.De2 b5=]

13...c6 [Zekert b5+d5]

14.Le2 Da5 15.0-0 [Wit rokeert en verbeterd de veiligheid van de koning]

15...Tad8 [Diagram



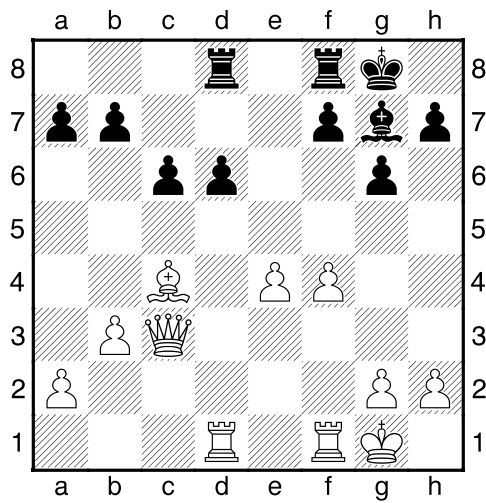
]

**16.f4?** [<sup>1</sup>16.Pa4!?<sup>3</sup> Moet overwogen worden.]

**16...Pxc4!** [Ontdekte aanval: e5, g7-c3]

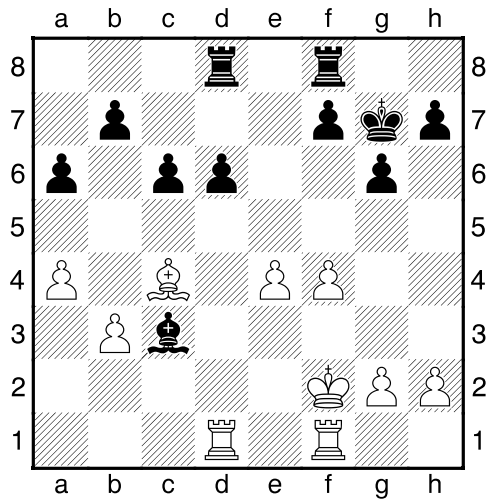
**17.Lxc4** [17.bxc4 Lxc3 Ontdekte aanval; 17.Lxc4 Lxc3 Ontdekte aanval; ...17.-- Pxe3 Wins material]

**17...Dxc3 18.Dxc3** [Diagram



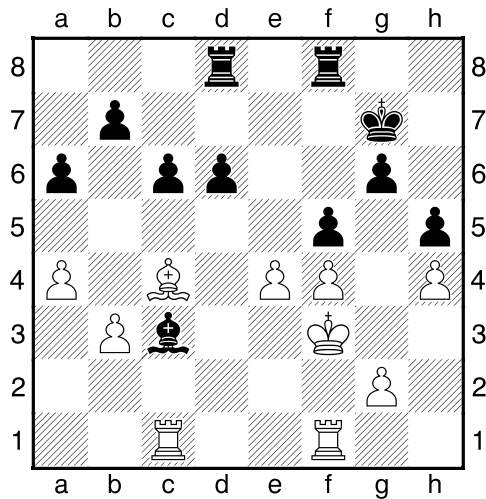
]

**18...Lxc3 19.a4 Kg7 20.Kf2 a6** [Diagram



]

21.Kf3 h5 22.h4 f5 23.Tc1?? [Diagram

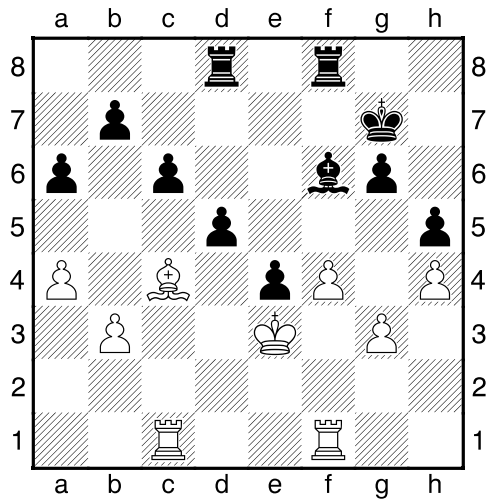


Een fout, maar er was niets meer te redden.]

[!23.exf5 d5 24.Le2 gxf5 25.Kg3--+]

23...fxe4+ 24.Ke3 Lf6 25.g3 [25.Th1 Dit verbetert nauwelijks iets aan de stelling. 25...d5 26.Lf1 Tfe8--+]

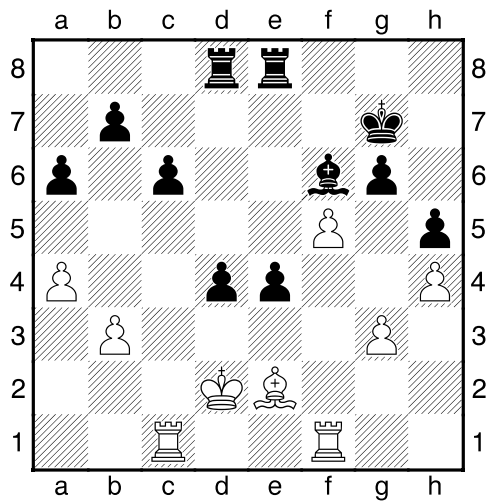
25...d5 [Diagram



]

**26.Le2 Tfe8 27.f5** [27.Kd2 De laatste strohalm. 27...d4 28.Ld1-+]

**27...d4+ 28.Kd2** [Diagram



]

[28.Kf2 Een vruchteloze poging om het lot te ontlopen. 28...d3-+]

**28...e3+** [28...e3+ 29.Kd3 Td6-+]

**0-1**