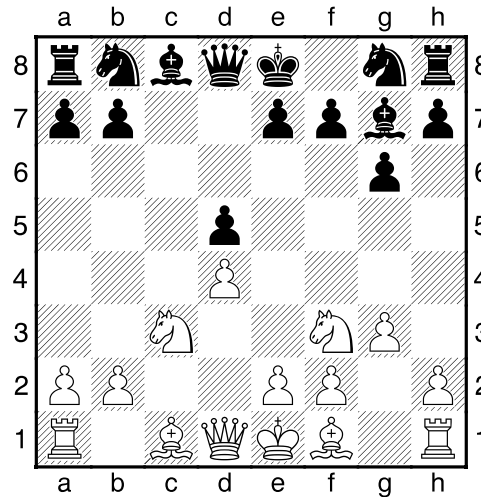


(111) Theo,Verstappen - Koert,Laenen [D79]

Intern GESS, 14.09.2020
[Deep Fritz 14 x64 (15m)]

[D79: Fianchetto Grünfeld: Symmetrische Variant (6 0-0 c6 7 cxd5 cxd5)]

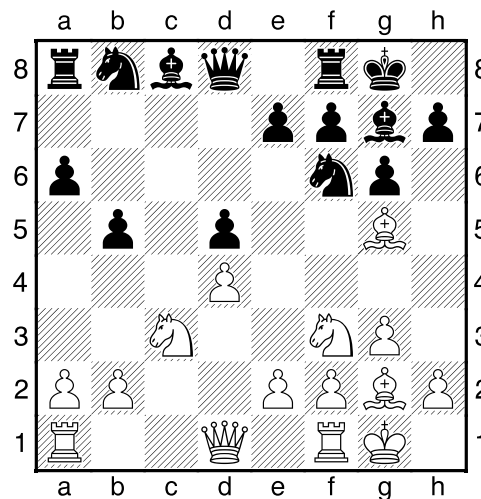
1.c4 g6 2.d4 Lg7 3.Pc3 c6 4.Pf3 d5 5.cxd5 cxd5 6.g3 [Diagram



]

6...Pf6 7.Lg2 0-0 8.0-0 a6 9.Lg5 [9.Lf4?]

9...b5 [Diagram

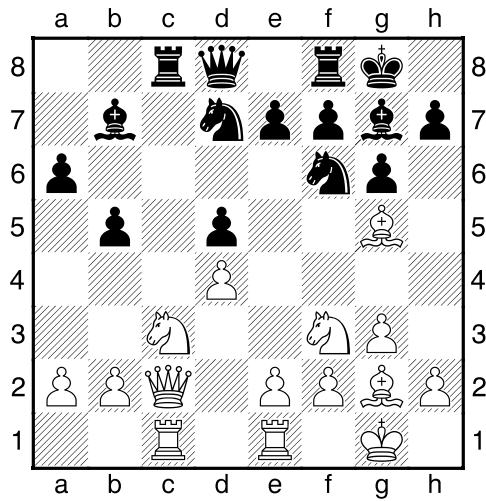


]

[9...Pe4 10.Lf4=]

10.Dc2 [10.Lxf6!? exf6 11.Pxd5±]

10...Lb7 11.Tfe1 Pbd7 12.Tac1 Tc8 [Diagram



]

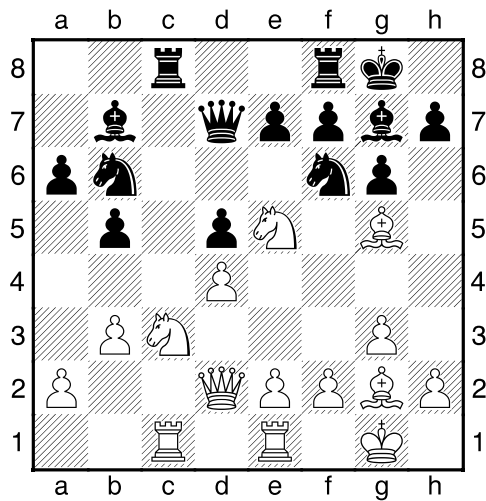
13.Dd2 [13.Db3 Db6=]

13...Pb6 14.b3 [Controleert a4+c4]

[14.Pe5 b4 15.Pb1 a5 16.Txc8 Pxc8 17.Lxf6 Lxf6=]

14...Dd7 [14...Pe4!? 15.Pxe4 dxe4μ]

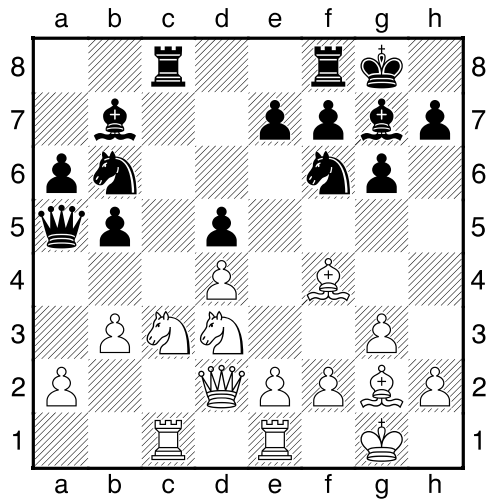
15.Pe5= [Diagram



]

15...Dd6 16.Lf4 Db4?? [16...Ph5 Is nog net speelbaar. 17.Le3 e6=]

17.Pd3+- Da5 [Diagram



]

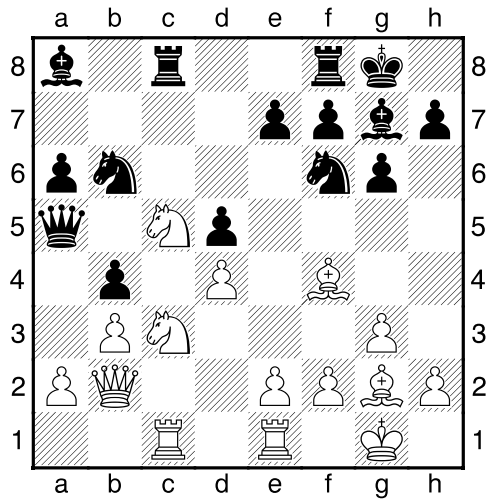
18.Pc5 [18.Pxd5 Maakt de winst nog eenvoudiger. 18...Dxd2 19.Pxe7+ Kh8 20.Lxd2 Txc1 21.Lxc1 Le4+--]

18...La8 [18...b4 19.Pxb7 bxc3 20.Pxa5 cxd2 21.Lxd2 Pe4+--]

19.Db2?? [Laat de winst glippen.]

[19.Pxd5 En zwart kan direct opgeven. 19...Dxd2 20.Pxe7+ Kh8 21.Lxd2+--]

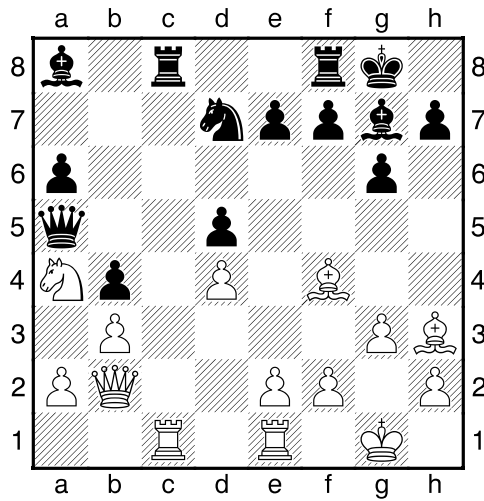
19...b4= [Diagram



]

20.P3a4 Pxa4 21.Pxa4 Pd7 [21...Pe4 22.Txc8 Txc8 23.Lxe4 dxe4 24.Tc1=]

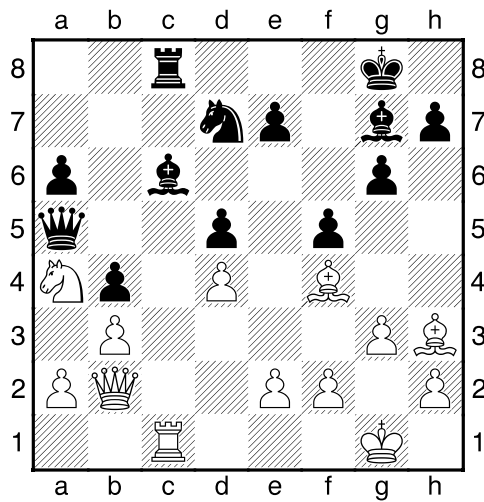
22.Lh3 [Diagram



]

22...f5 23.Txc8 Txc8 24.Tc1 [Wit dreigt met materiaalwinst: Tc1xc8]

24...Lc6 [Diagram



Zwart dreigt met materiaalwinst: Lc6xa4]

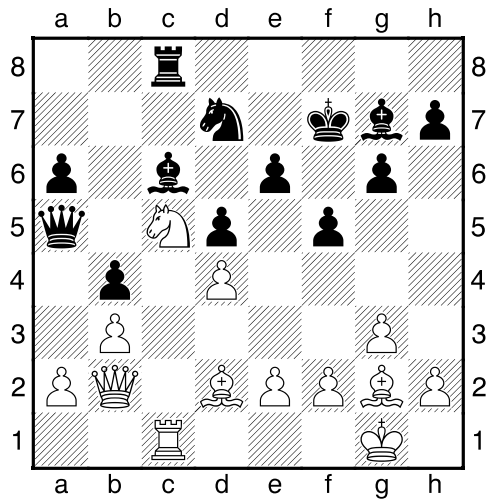
[24...Dd8 25.Txc8 Dxc8 26.Lg2=]

25.Lg2 e6 26.Pc5?? [Geeft de winst uit handen.]

[26.Dd2 Lf8?]

26...Kf7 [26...Pxc5 Levert nog groter voordeel op. 27.Dd2 Pe4 28.Lxe4 dxe4 29.Le5--+]

27.Ld2?? [Diagram

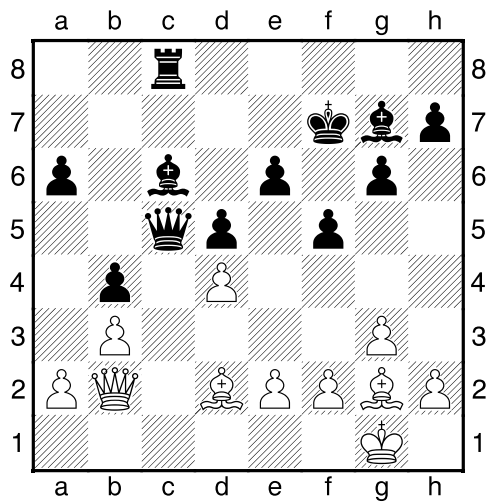


De stelling wordt er niet beter op.]

[!27.Pd3² Is de enige kans op redding.]

27...Pxc5→ **28.Txc5** [28.Lf4→ Kan het einde nog wat uitstellen.]

28...Dxc5!! [Diagram



Deflectie: d4]

[28...Dxc5 29.dxc5 Lxb2 30.Lxb4 Ld7→]

0-1