

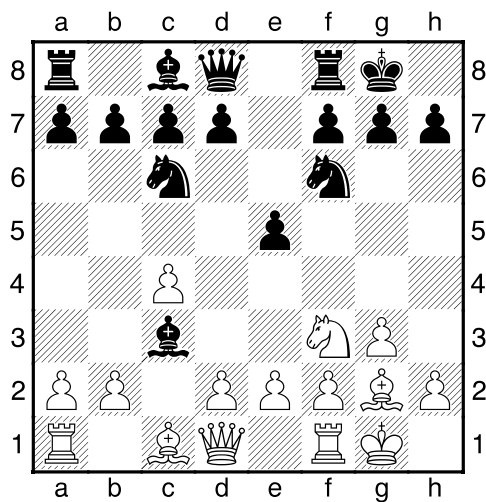
**(126) Theo,Verstappen - John,Verstraten [A29]**

Intern GESS, 21.06.2021

[Deep Fritz 14 x64 (15m)]

[A29: Engelse Opening: Vier Paarden Variant met 4 g3]

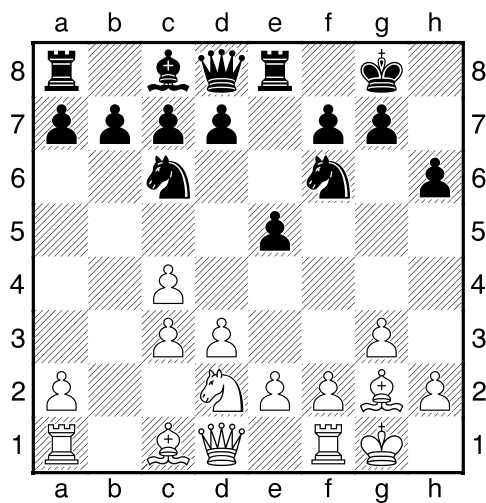
1.c4 e5 2.Pc3 Pc6 3.Pf3 Pf6 4.g3 Lb4 5.Lg2 0-0 6.0-0 Lxc3 [Diagram



]

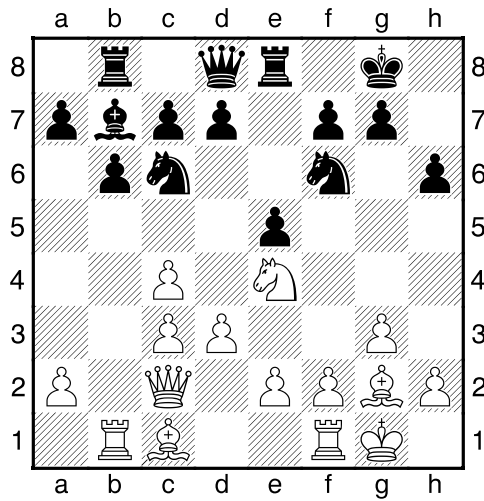
7.bxc3 h6 8.d3 [laatste zet uit boek]

8...Te8 9.Pd2 [Diagram



]

9...Tb8 10.Tb1 b6 11.Pe4 Lb7 12.Dc2 [Diagram



]

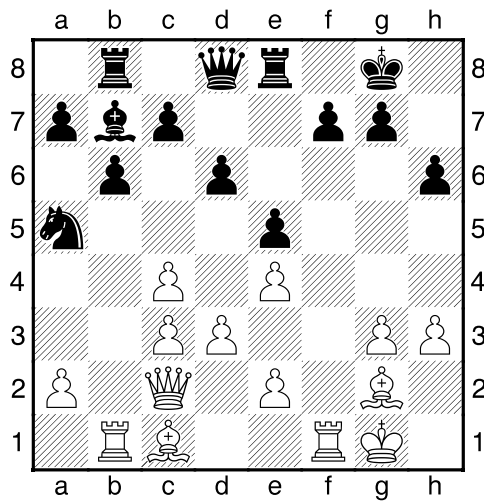
**12...d6** [Beheerst c5]

**13.h3** [Dekt g4]

[13.Pxf6+ Dxf6 14.Da4 Pa5=]

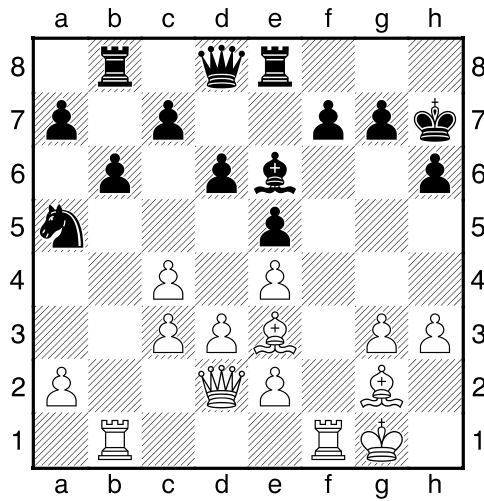
**13...Pa5 14.f3** [Zekert e4]

**14...Pxe4 15.fxe4** [Diagram]



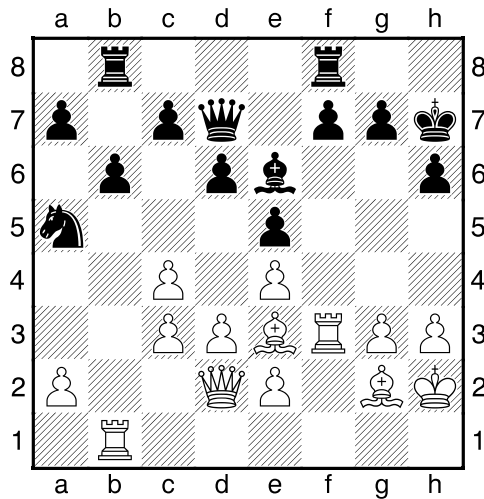
Wit heeft nieuwe dubbele pionnen: e2+e4]

**15...Lc8 16.Le3 Le6 17.Dd2 Kh7** [Diagram]



]

**18.Tf3 Dd7 19.Kh2 Tf8** [Diagram



]

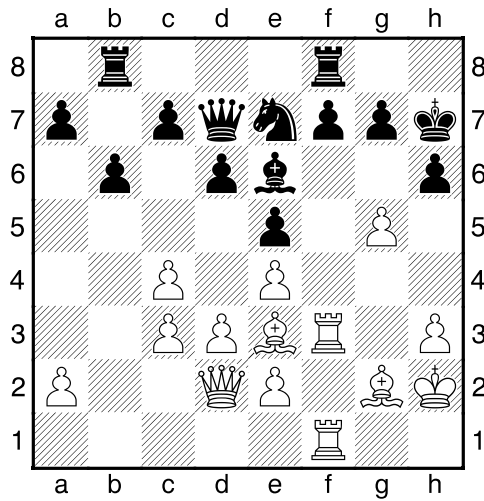
[19...f6 20.Tff1<sup>3</sup>]

**20.Tbf1** [20.Lxh6 Th8 ...gxh6 gaat mat (20...gxh6 21.Tf6 Kg8 22.Dxh6 Lf5 23.exf5 Tfe8 24.Dg5+ Kf8 25.Th6 f6 26.Dxf6+ Df7 27.Th8#) 21.Le3 c5<sup>2</sup>]

**20...Pc6** [20...Kg8 21.Lxh6 De7 22.Le3<sup>2</sup>]

**21.g4** [21.Lxh6!? Komt in aanmerking. 21...Th8 22.Le3<sup>2</sup>]

**21...Pe7<sup>3</sup> 22.g5** [Diagram



]

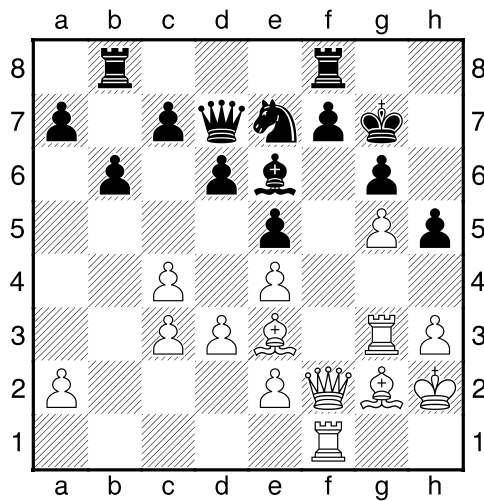
[22.Tb1 Pg6<sup>3</sup>]

**22...h5 23.De1 g6** [Zwart heeft een nieuwe achtergelegen pion: f7]

[23...Pg6 24.Dg3<sup>3</sup>]

**24.Tg3 Kg7** [De veiligheid van de zwarte koning is verslechterd]

**25.Df2** [Diagram

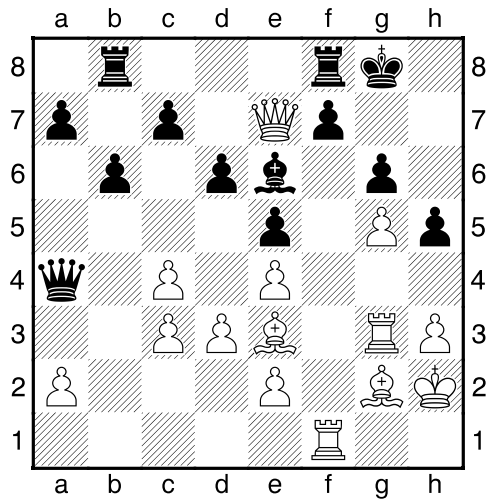


]

**25...Da4??** [Geeft de winst uit handen.]

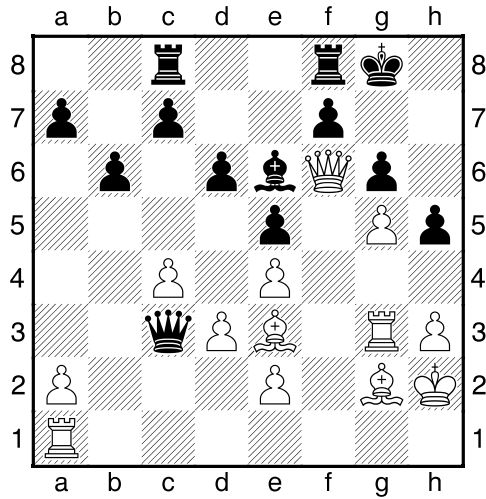
[<sup>1</sup>25...Kg8<sup>3</sup> Was de beste kans om terug te vechten.]

**26.Df6+- Kg8 27.Dxe7** [Diagram



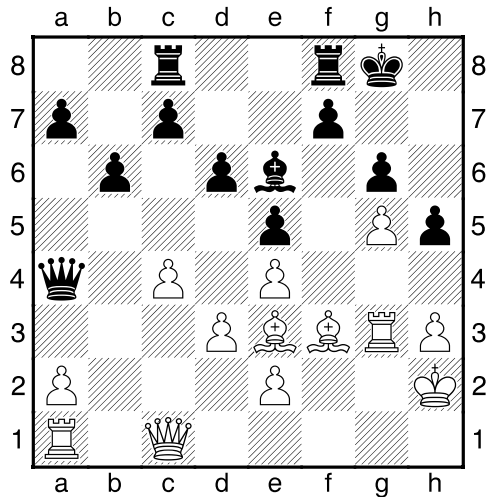
]

27...Tbc8 28.Ta1 Dc2 29.Df6 Dxc3 [Diagram



[29...Dxe2 30.Df1 Dc2 31.Tc1 Dxa2 32.Ta1+-]

30.Df1 Da3 31.Dc1 Da4 32.Lf3 [Diagram

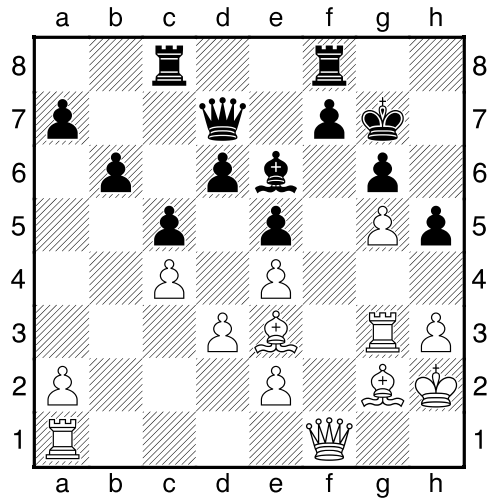


]

**32...Dd7 33.Lg2 c5??** [Geeft de tegenstander nieuwe kansen.]

[33...Da4 34.Dd1 Dd7+–]

**34.Df1 Kg7** [Diagram

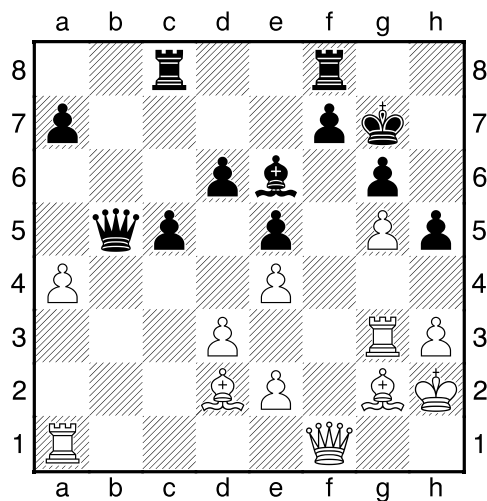


]

[34...b5 35.cxb5 Dxb5 36.Tb1+–]

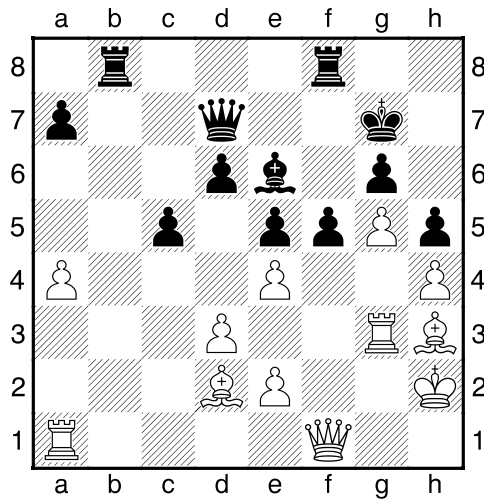
**35.Ld2** [35.a4 Tb8+–]

**35...b5 36.cxb5 Dxb5 37.a4** [Diagram



]

**37...Dd7 38.h4 Tb8 39.Lh3 f5?** [Diagram

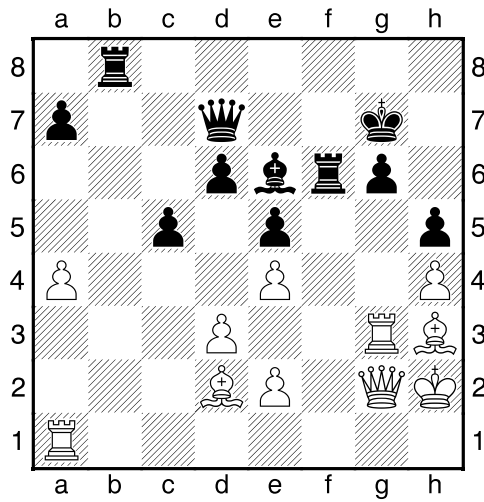


]

[139...Lxh3 40.Dxh3 Dc7±]

40.gxf6+- Txf6 [40...Kh7+- Een vruchteloze poging om het lot te ontlopen.]

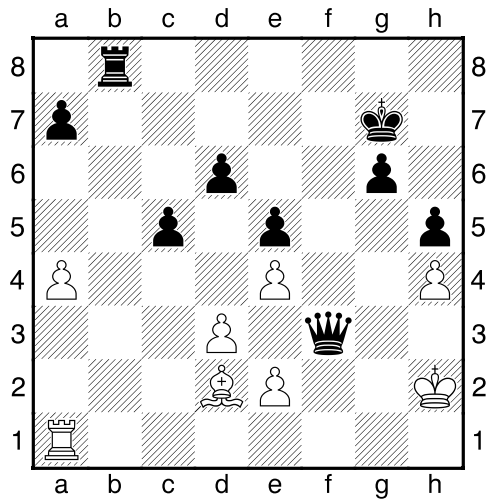
41.Dg2 [Diagram



]

[41.Lh6+! Beslist de partij meteen. 41...Kf7 42.Dxf6+ Kxf6 43.Tf1+ Ke7 44.Txg6+-]

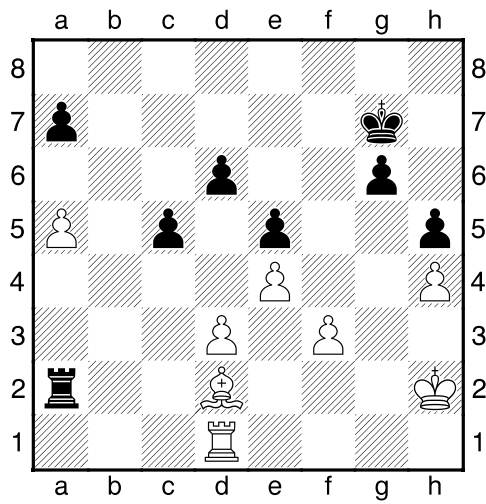
41...Lxh3 42.Txh3 Df7 43.Tf3 Txf3 44.Dxf3 Dxf3 [Diagram



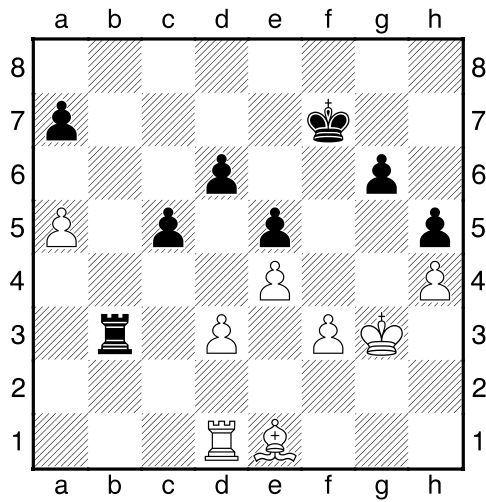
]

45.exf3 Tb2 46.Td1 Ta2 [46...Tb3 47.a5+-]

47.a5 [Diagram



47...Ta3 48.Le1 Tb3 49.Kg3 Kf7 [Diagram

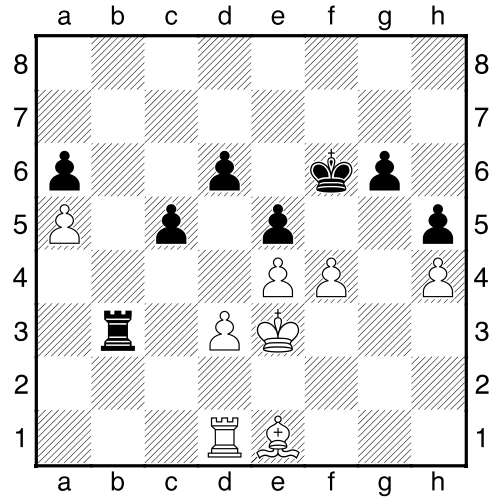




]

**50.Kf2 a6 51.Ke3 Kf6** [51...Ke6 52.f4 d5 53.fxe5 Kxe5 54.Lg3+ Ke6 55.Tc1+–]

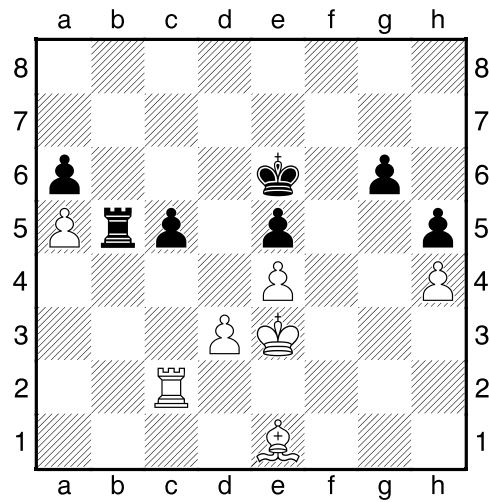
**52.f4** [Diagram



]

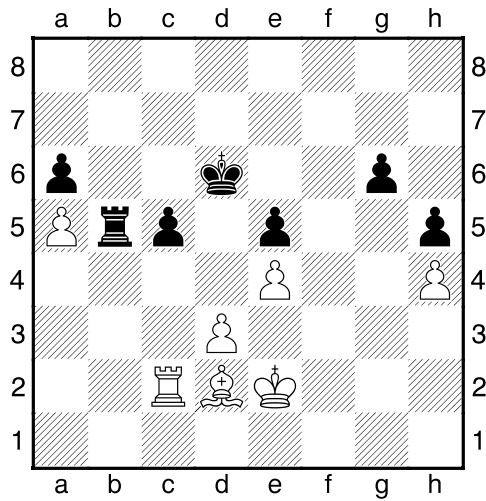
**52...Tb5** [52...Ta3 53.fxe5+ Kxe5 54.Ta1+–]

**53.fxe5+ dxe5 54.Tc1 Ke6 55.Tc2** [Diagram



]

**55...Tb1 56.Ke2 Kd6 57.Ld2 Tb5** [Diagram

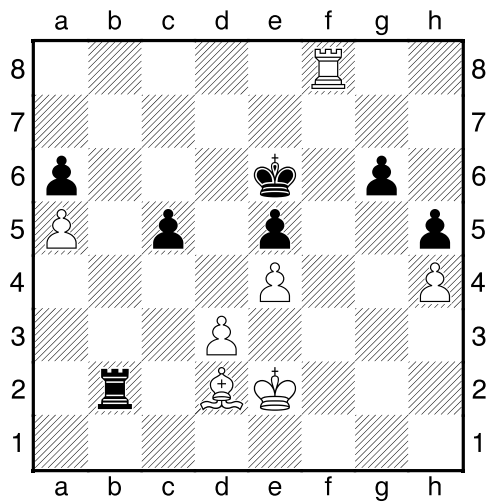


]

[57...Th1 58.Le1 g5 59.hxg5+-]

**58.Tc1 Ke6 59.Tf1 Tb2** [59...Ke7+- De laatste stuiptrekkingen.]

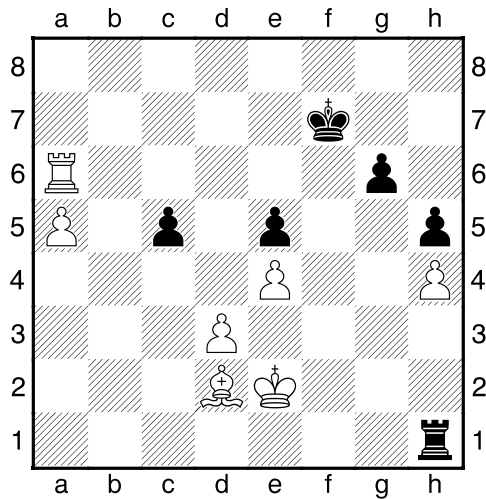
**60.Tf8** [Diagram



]

**60...Tb1** [60...Tc2 Kan het voorafgegane niet meer ongedaan maken. 61.Ta8 c4 62.Txa6+ Kf7 63.dxc4 Txc4 64.Ke3+-]

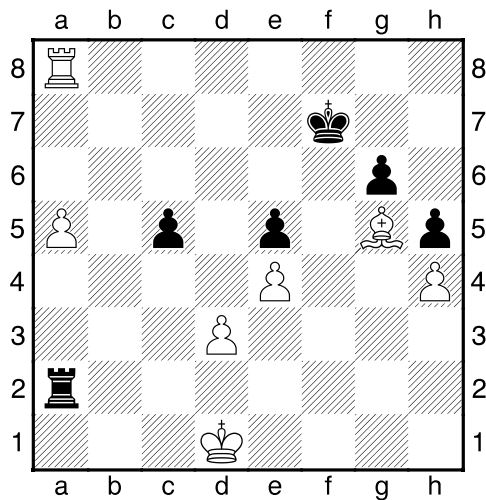
**61.Ta8 Th1 62.Txa6+ Kf7** [Diagram



]

[62...Kd7 Dit verbetert nauwelijks iets aan de stelling. 63.Txg6 Th2+ 64.Kd1+–]

**63.Lg5 Th2+ 64.Kd1 Ta2 65.Ta8** [Diagram



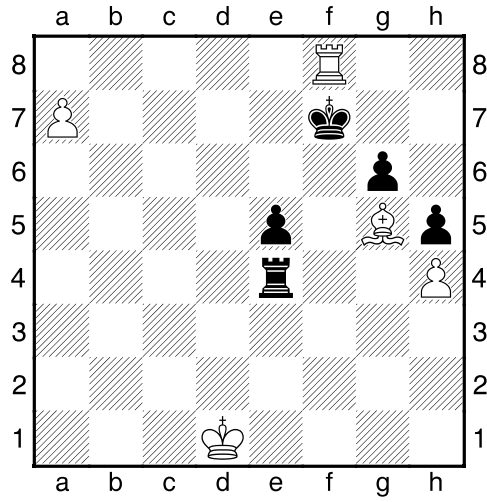
]

[!65.Tf6+ Maakt de winst nog eenvoudiger. 65...Ke8 66.a6+–]

**65...Ta4** [65...Ke6+– De laatste strohalm.]

**66.a6 c4** [66...Ta3 Dit helpt ook niet meer. 67.Kd2 Ta2+ 68.Kc3+–]

**67.dxc4 Txc4 68.a7 Txe4 69.Tf8+!** [Diagram



wit moet wat van zijn veroverde materiaal afstaan.]

[69.Tf8+ Ke6 70.a8D Td4+ 71.Ke2 Kd6 72.Db7 Te4+ 73.Dxe4 Kc5 74.Dc2+ Kd6 75.Td8+ Ke6 76.Dxg6#]

**1-0**