

**(146) Theo,Verstappen - Harry,van der Pol [A22]**

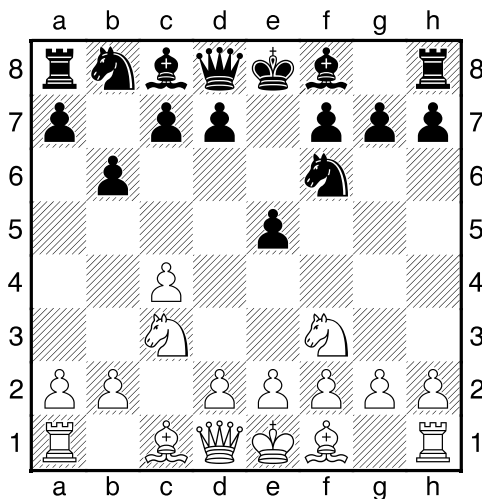
Coronacompetitie, 31.01.2022

[Deep Fritz 14 x64 (15m)]

[A22: Engelse Opening: 1...e5 2 Pc3 Pf6]

**1.c4 e5 2.Pc3 Pf6 3.Pf3** [laatste zet uit boek]

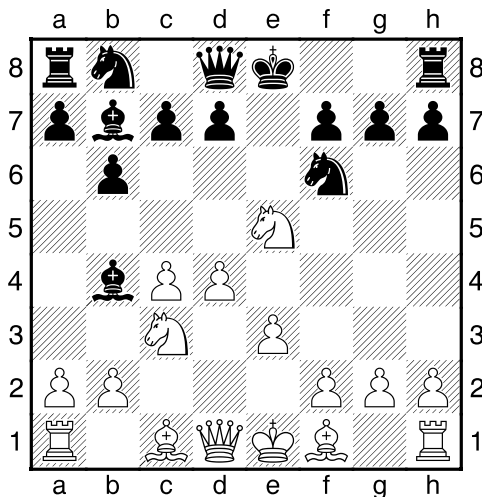
**3...b6** [Diagram



]

[3...Pc6!?= Moet zeker in aanmerking genomen worden.]

**4.Pxe5± Lb7 5.d4 Lb4 6.e3** [Diagram

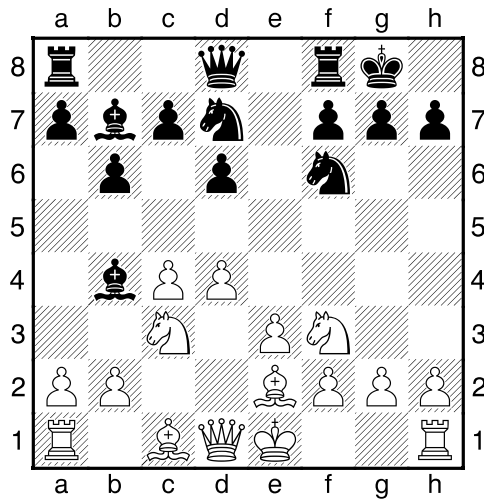


]

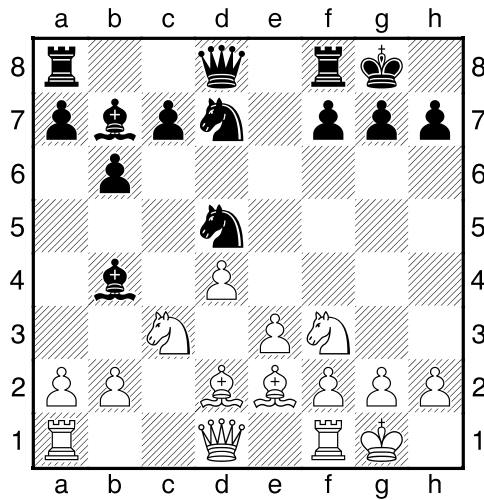
**6...d6** [6...0-0 7.Pf3²]

**7.Pf3** [7.Da4+ Pf7 8.Dxb4 dxe5±]

**7...0-0 8.Le2 Pbd7** [Diagram



9.Ld2 d5 10.cxd5 Pxd5 11.0-0 [Diagram

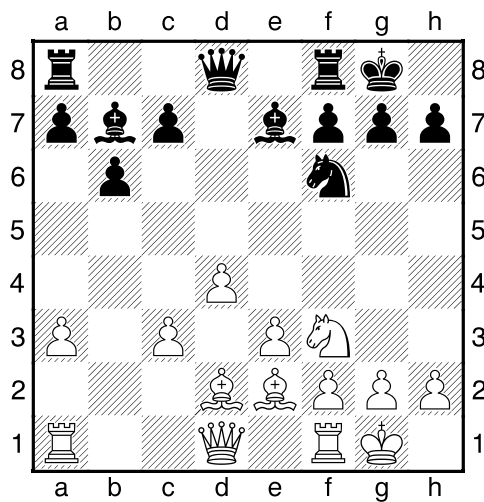


11...P7f6 [11...Pxc3 12.Lxc3 Lxc3 13.bxc3±]

12.a3 [12.Pxd5!? Pxd5 13.Lxb4 Pxb4 14.Lc4±]

12...Pxc3 13.bxc3 [13.Lxc3 Ld6±]

13...Le7 [Diagram

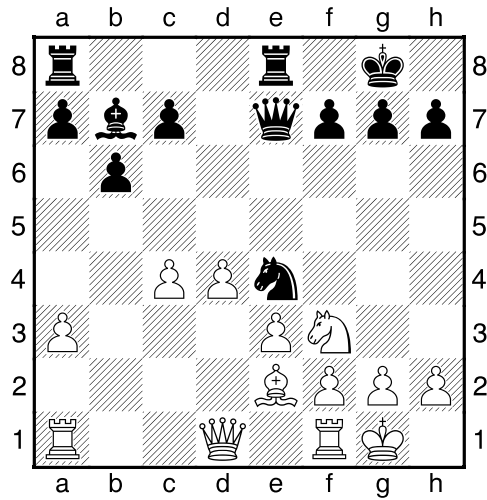


]

[13...Ld6 14.c4<sup>2</sup>]

14.c4 Pe4 15.Lb4 Te8 [15...c5 16.Le1<sup>2</sup>]

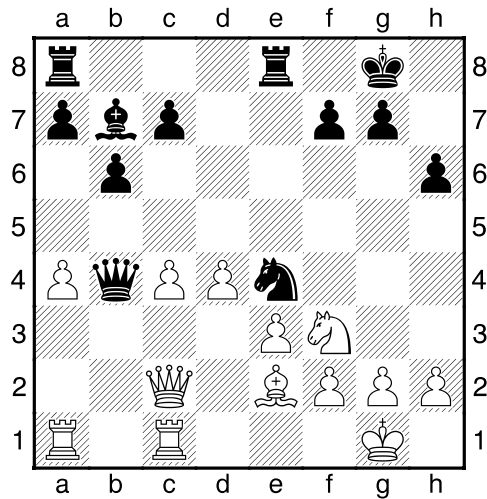
16.Lxe7± Dxe7 [Diagram



]

17.Dc2 h6 [Beheerst g5]

18.a4 Db4 19.Tfc1 [Diagram

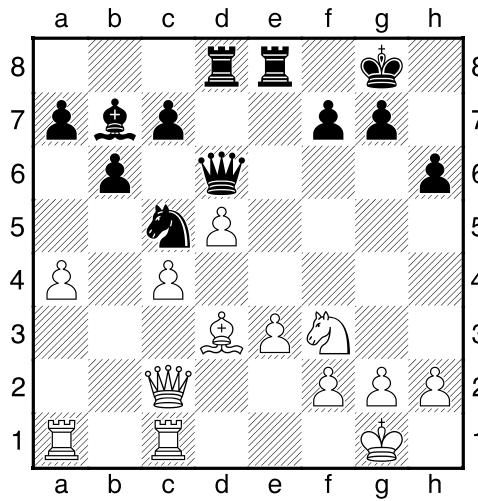


]

19...Tad8 20.Ld3 Dd6 [20...De7±]

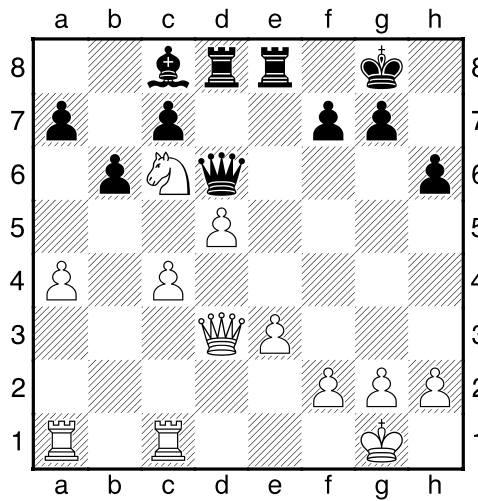
21.d5 [!21.a5!±]

21...Pc5<sup>2</sup> [Diagram



22.Pd4 Pxd3 23.Dxd3 Lc8 [!23...a5±]

24.Pc6?? [Diagram]



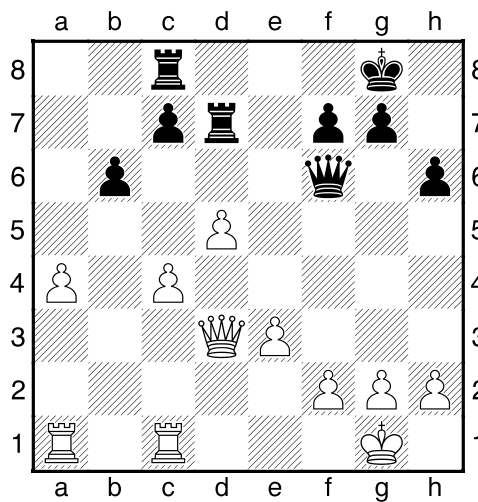
De winst is opeens weer ver weg.]

[24.Pb5 De7+--]

24...Td7?? [Geeft de zekere winst uit handen.]

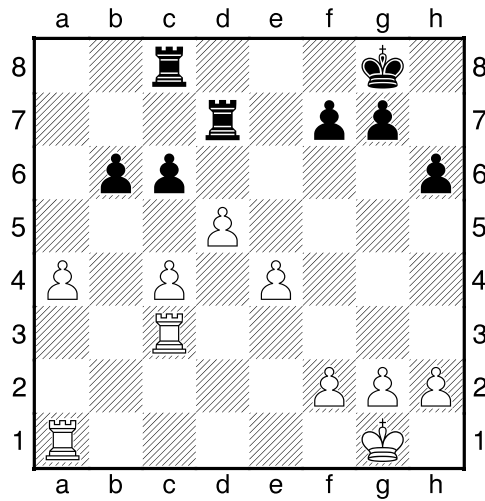
[!24...Dxc6! Met zeer goede kansen voor zwart. 25.a5 Dc5--+]

25.Pxa7+- Df6 26.Pxc8 Txc8 [Diagram]



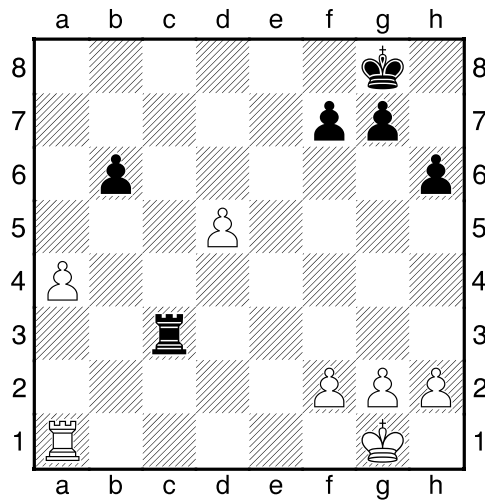
27.Dc3 [27.a5 bxa5 28.Txa5 c6+–]

27...Dxc3 28.Txc3 c6 29.e4 [Diagram



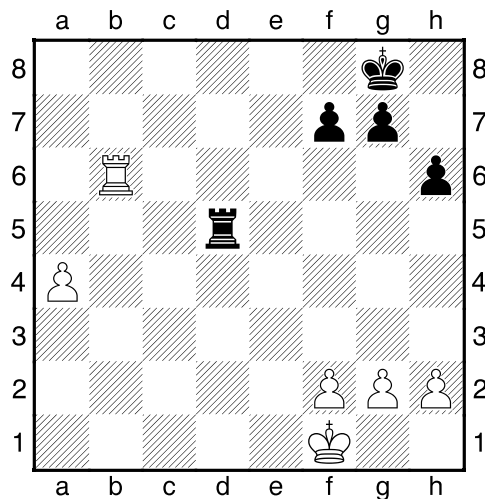
[!29.Td3+– Jammer dat wit deze uitstekende kans heeft gemist.]

29...cxd5± 30.exd5 Txd5 31.cxd5 Txc3 [Diagram



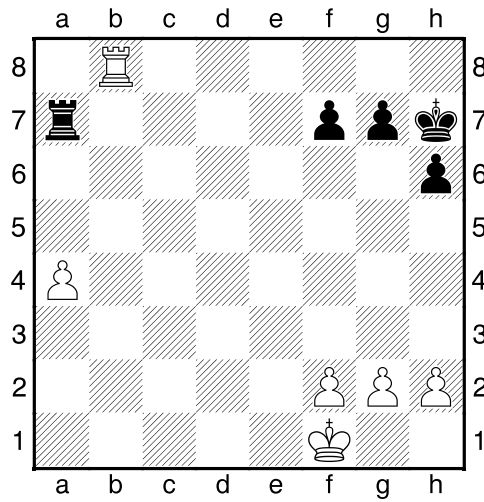
Wit heeft een nieuwe gepasseerde pion: d5]

32.Kf1 Td3 33.Tb1 Txd5 34.Txb6 [Diagram



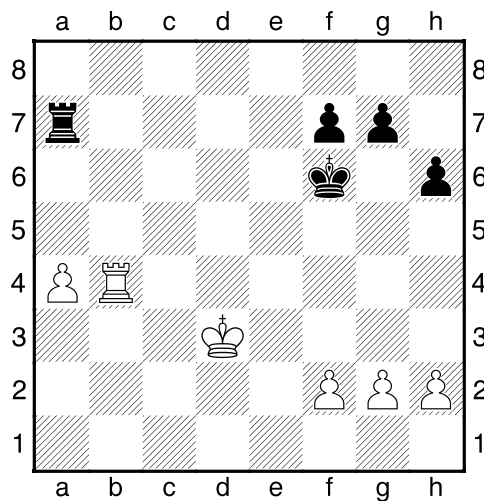
34...Ta5 35.Tb4 Ta7 36.Tb8+ [136.Ke2!?!±]

36...Kh7= [Diagram

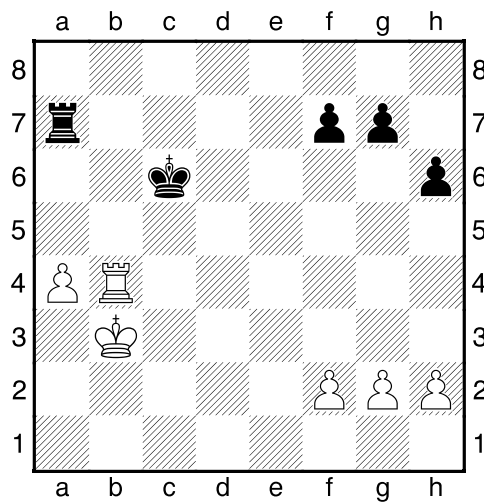


37.Tb4 Kg6 [37...Kg8 38.Ke2 Kf8±]

38.Ke2 Kf6 39.Kd3 [Diagram



39...Ke6 40.Kc4 Kd6 41.Kb3 Kc6 [Diagram



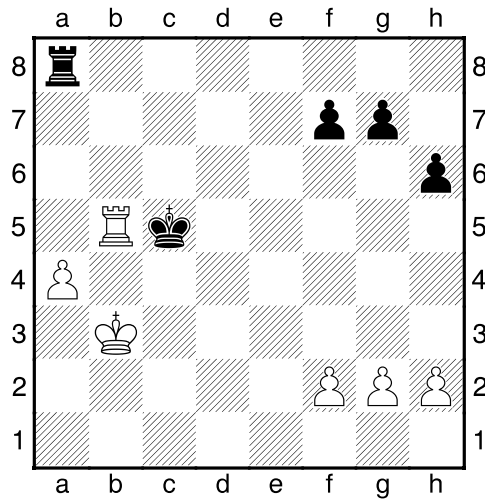
]

42.Kc4 Ta8 [42...Kd6 43.Kc3±]

43.Kb3 Kc5?? [Nu is de tegenstander weer terug in het spel.]

[43...Ta7!?= Is interessant.]

44.Tb5+ [Diagram



]

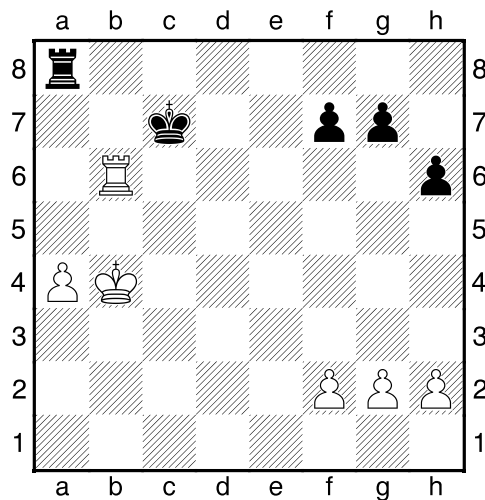
[44.Tb7!±]

44...Kc6 45.Kb4 Kd6? [45...Te8 46.Kc3±]

46.Tb6+?? [Hierna keren de kansen.]

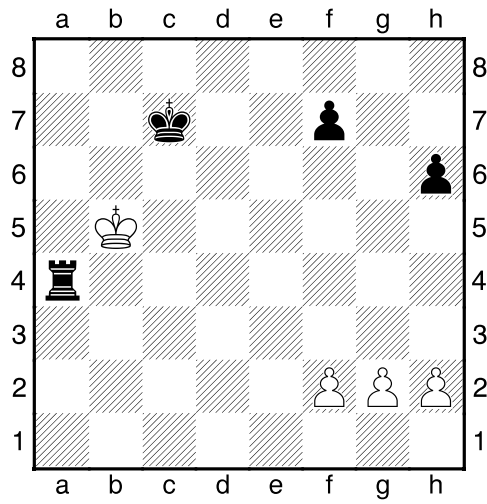
[46.Tb7+– En wit zou het beste van het spel krijgen.]

46...Kc7<sup>2</sup> [Diagram



Zwart dreigt met materiaalwinst: Kc7xb6]

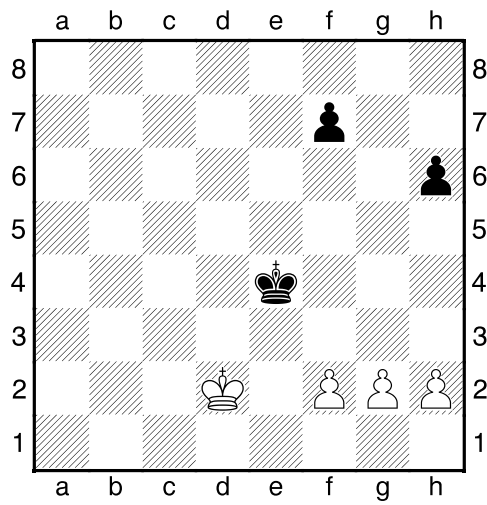
47.Kb5 Txa4 48.Txh6 gxh6? [Diagram



]

[48...Tg4 En zwart haalt alles uit de kast. 49.Tc6+ Kd7?]

49.Kxa4+- Kd6 50.Kb4 Kd5 51.Kc3 Ke4 52.Kd2 [Diagram



]

1-0