

(33) Piet,van Nassau - Jan,Selman [D02]

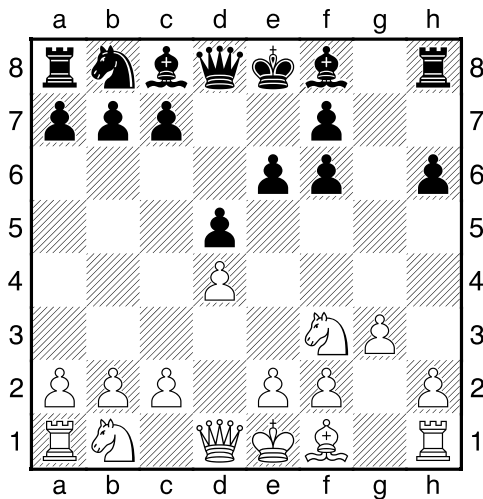
Intern Geleen , 1960

[Deep Fritz 14 x64 (15m)]

[D02: 1 d4 d5 2 Pf3 Zijvarianten, inclusief 2...Pf6 3 g3 en 2...Pf6 3 Lf4]

1.d4 d5 2.Pf3 e6 3.g3 Pf6 [laatste zet uit boek]

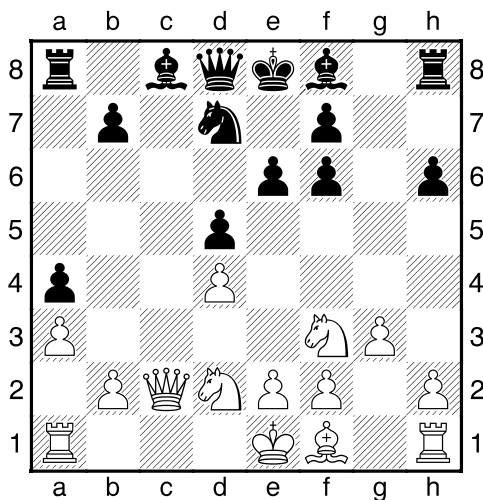
4.Lg5 h6 5.Lxf6 gxf6 [Diagram]



Zwart heeft een loperpaar]

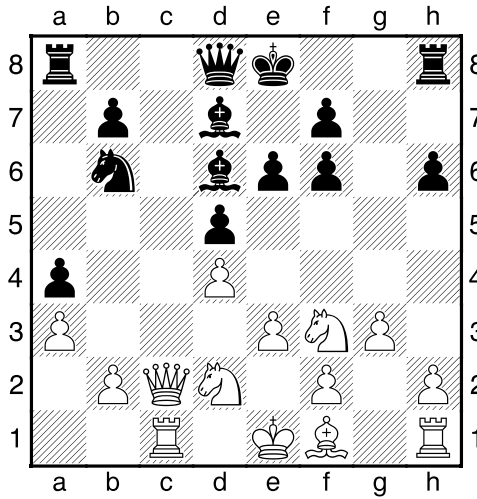
[5...Dxf6 6.c4=]

6.Pbd2 Pd7 7.c4 c6 8.Db3 a5 9.cxd5 a4 10.Dc2 cxd5 11.a3 [Diagram

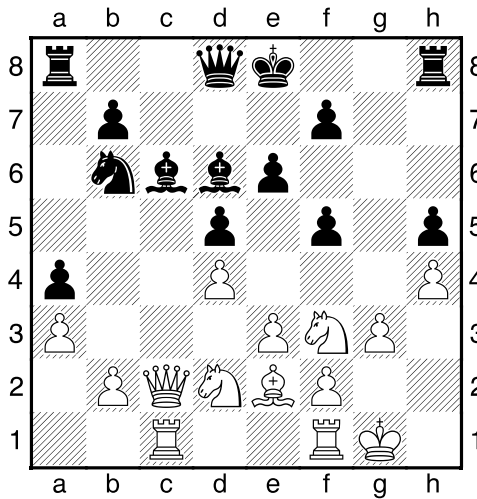


Zekert b4]

11...Pb6 12.e3 Ld7 13.Tc1 Ld6 [Diagram]

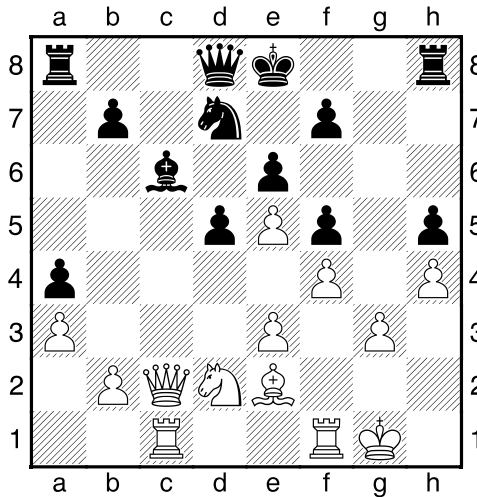


14.Le2 h5 15.0-0 f5 16.h4 Lc6 [Diagram]



[16...Db8 17.Tfd1=]

17.Pe5² Lxe5 18.dxe5 Pd7 19.f4 [Diagram]

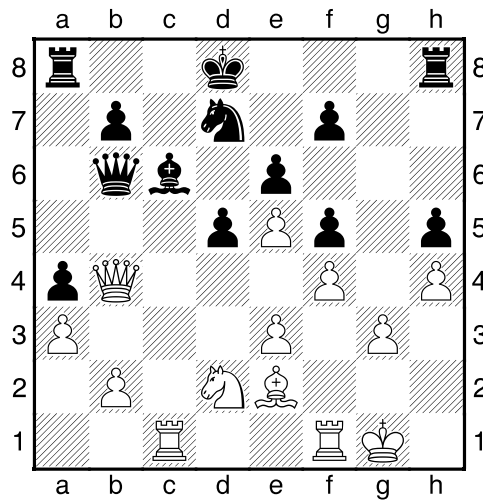


[19.Dc3 Tg8 20.Dd4 Dc7]

19...Db6= [Zwart dreigt met materiaalwinst: Db6xe3]

20.Dc3 Ke7 [Zwart verliest het recht om te rokeren]

21.Db4+ Kd8 [Diagram

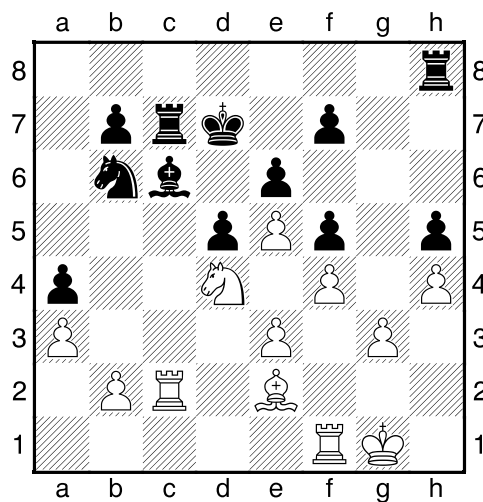


[21...Dxb4 22.axb4 Pb6 23.Kf2=]

22.Dxb4+ Pxb6 23.Pf3 Kd7 [23...Ke7!?=]

24.Pd4± [Een riante positie voor het witte paard.]

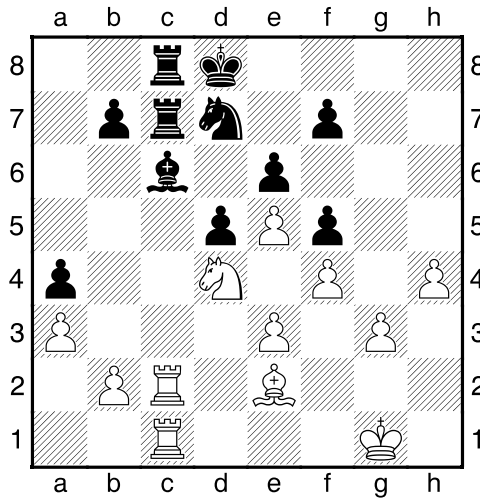
24...Tac8 25.Tc2 Tc7 [Diagram



[25...Ke7 26.Tfc1 f6 27.Pxc6+ bxc6 28.Txc6²]

26.Tfc1± Thc8 [²26...Tcc8!±]

27.Lxh5+- Kd8 28.Le2 Pd7?! [Diagram]

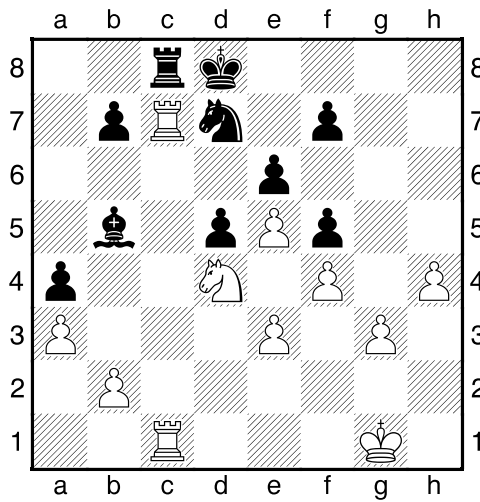


Geen manier om weerstand te bieden.]

[28...Pa8 29.h5 Ke7 30.h6+-]

29.Lb5 [29.h5!?! Geeft de tegenstander geen kans. 29...Pf8+-]

29...Lxb5 30.Txc7 [Diagram]



[30.Txc7 Txc7 31.Txc7+-]

1-0