

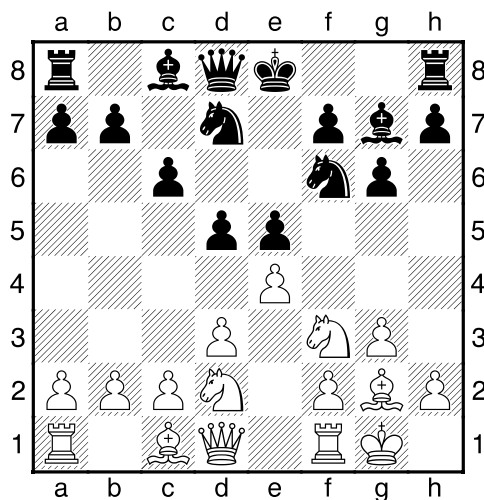
(3) Marcel, van Haren - Theo, Verstappen [A07]

16.11.2015

[Deep Fritz 14 x64 (20m)]

[A07: Réti Opening: New York en Capablanca Systemen]

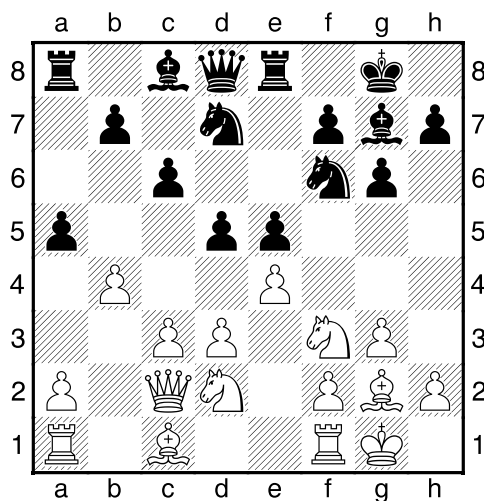
1.Pf3 d5 2.g3 Pf6 3.Lg2 g6 4.0-0 Lg7 5.d3 c6 6.Pbd2 Pbd7 7.e4 e5 [Diagram]



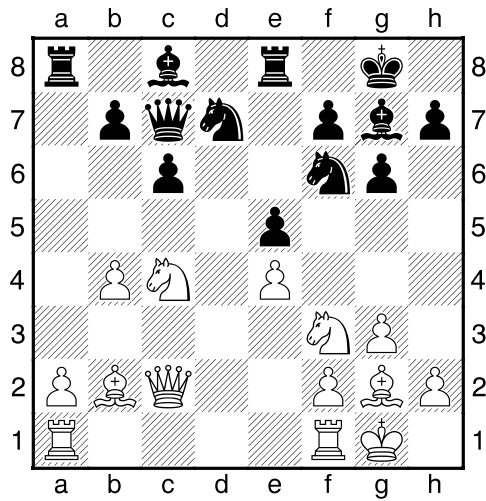
[laatste zet uit boek]

8.c3 [8.exd5 Pxd5 9.c4 Pc7=]

8...0-0= 9.Dc2 Te8 10.b4 a5 [Diagram]



11.Lb2 axb4 12.cxb4 dxe4 13.dxe4 Dc7 14.Pc4 [Diagram]

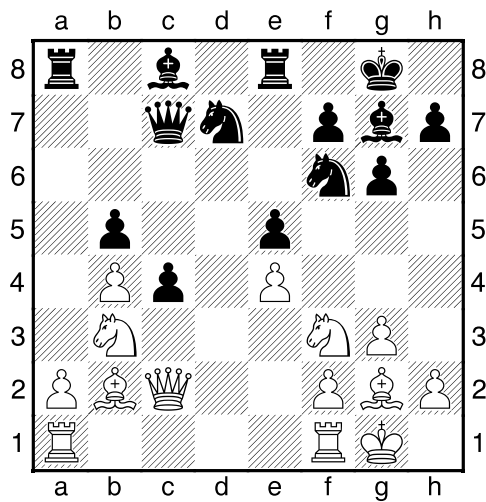


[Verhoogt de druk op e5.]

[14.a4 b6=]

14...b5 15.Pa5 c5 16.Pb3 [16.Tfc1!?=]

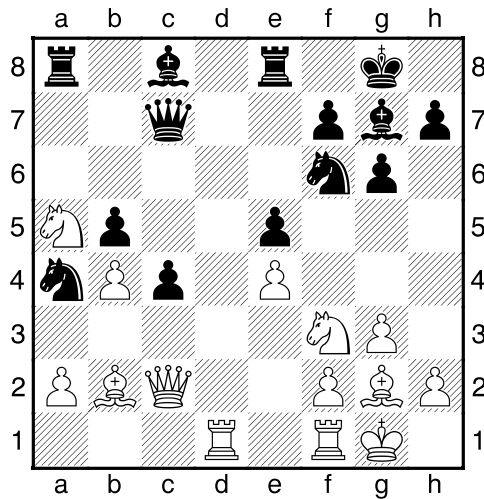
16...c4 [Diagram]



[Zwart dreigt met materiaalwinst: c4xb3]

17.Pa5 [Het witte paard houdt een mooie plaats bezet.]

17...Pb6 18.Tad1 Pa4 [Diagram]



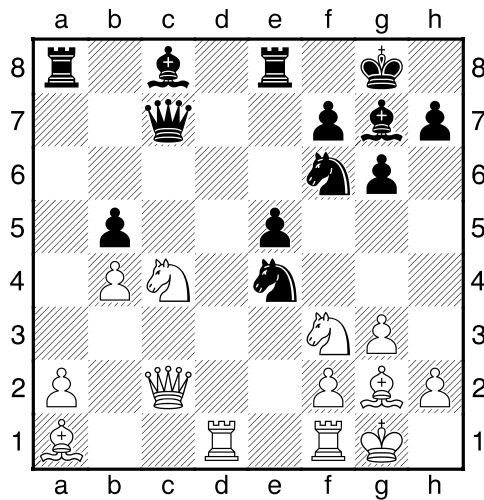
[18...Lf8 19.a3]

19.La1 [19.Lxe5 Txe5 20.Pxe5 Dxe5 21.Td8+ Lf8 22.Dd2=]

19...Pc5 [19...Ld7 20.Tfe1]

20.Pxc4 [20.Lxe5!? Is een bruikbaar alternatief. 20...Txe5 21.Pxe5 Dxe5 22.Td8+ Lf8 23.bxc5]

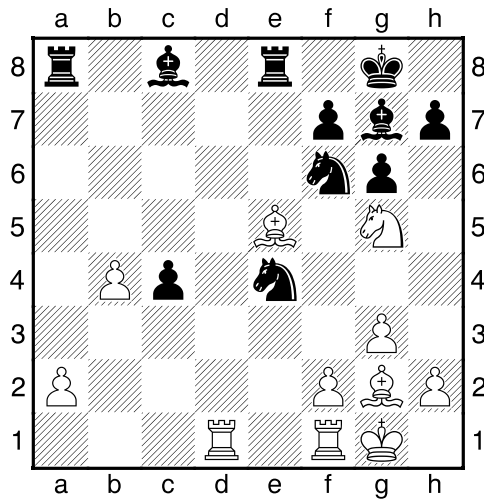
20...Pcxe4 [Diagram]



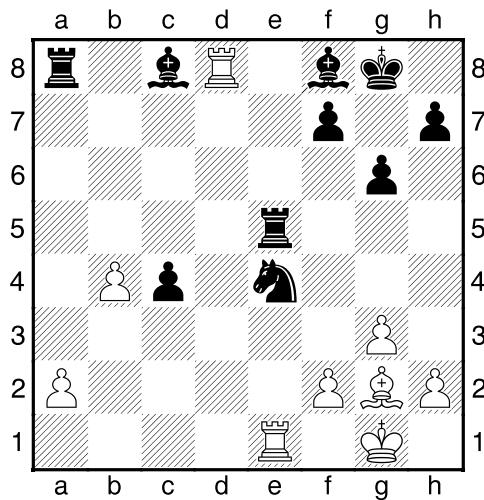
[20...Pcd7 21.Pe3 Dxc2 22.Pxc2 Txa2]

21.Lxe5?? [121.Pfd2 Was de laatste mogelijkheid. 21...Lf5 22.Pxe4 Pxe4 23.Lxe4 Lxe4 24.Dxe4 Dxc4 25.Dxc4 bxc4 26.Td2=]

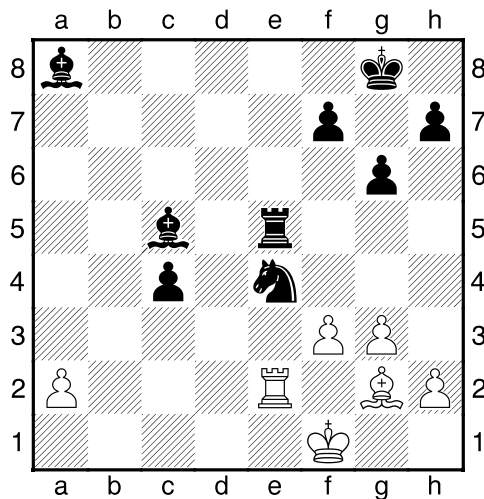
21...Dxc4+ 22.Dxc4 bxc4 23.Pg5 [Diagram]



[23.Tfe1 Kan het einde nog wat uitstellen. 23...c3 24.Ta1--+]
 23...Txe5 24.Pxe4 Pxe4 25.Td8+ Lf8 26.Te1 [Diagram

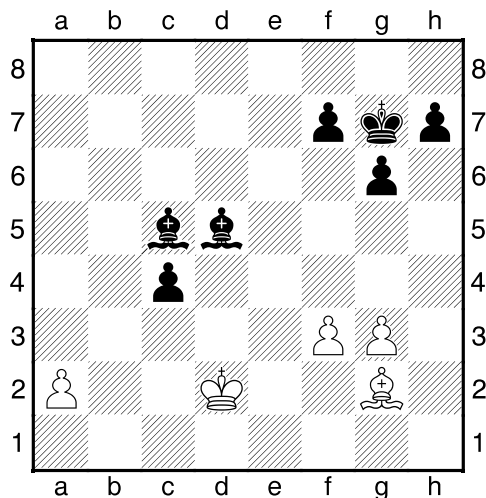


[26.f4 Een vruchteloze poging om het lot te ontlopen. 26...Te6 27.Te1 c3--+]
 26...Lb7 27.Txa8 Lxa8 28.f3 [28.Tc1 Biedt nog een hele kleine kans. 28...Lxb4 29.Txc4--+]
 28...Lxb4 29.Te2 Lc5+ 30.Kf1 [Diagram]



30...P**xg3**! [Een krachtig en ontzuclterend einde.]

31.h**xg3** T**x**e2 32.K**x**e2 Ld5 33.Kd2 K**g**7 [Diagram]



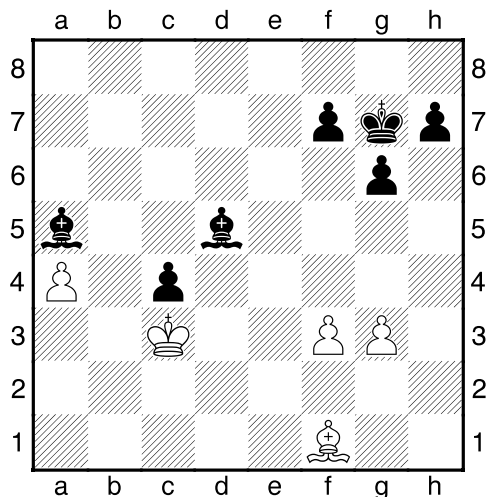
[33...Lb4+ Hiermee zou zwart definitief uit de problemen zijn. 34.Kc2 K**g**7 35.Kc1-+]

34.K**c**3 [34.Kc2 Ook dit kan de treurige afloop niet beïnvloeden. 34...Lb4+]

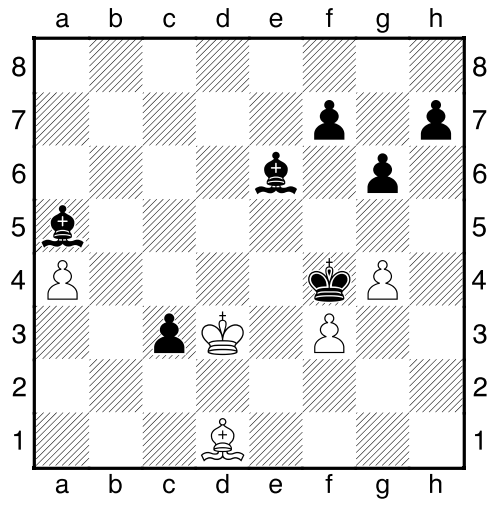
34...L**e**7 [34...Ld6 Is nauwkeuriger. 35.g4 Le5+ 36.Kc2-+]

35.a4 [35.Kc2 Verandert niets meer. 35...Ld6 36.g4 Lc7-+]

35...Ld8 36.Lf1 La5+ [Diagram]



37.Kc2 c3 38.Le2 Kf6 39.Ld1 Ke5 40.Kd3 Le6 41.g4 Kf4 [Diagram]



0-1