

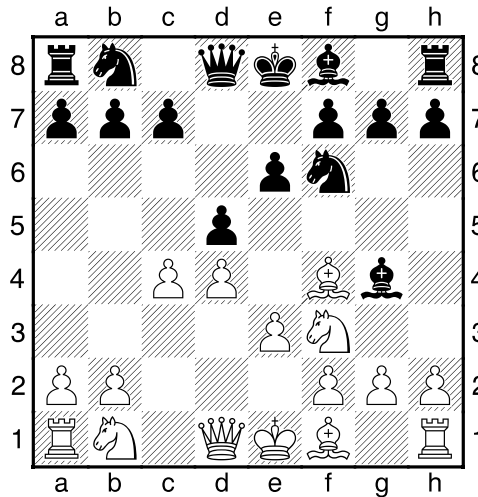
**(142) Jan,Pellegrom - Theo,Verstappen [D02]**

Intern GESS, 01.11.2021

[Deep Fritz 14 x64 (15m)]

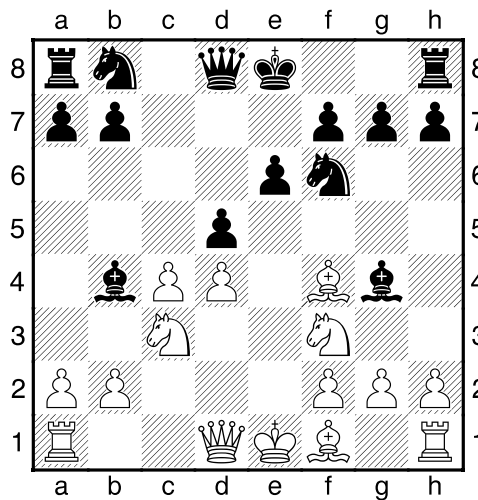
[D02: 1 d4 d5 2 Pf3 Zijvarianten, inclusief 2...Pf6 3 g3 en 2...Pf6 3 Lf4]

**1.d4 d5 2.Lf4 Pf6 3.e3 Lg4 4.Pf3 e6 5.c4** [Diagram



laatste zet uit boek]

**5...c5 6.Pc3 cxd4 7.exd4 Lb4** [Diagram

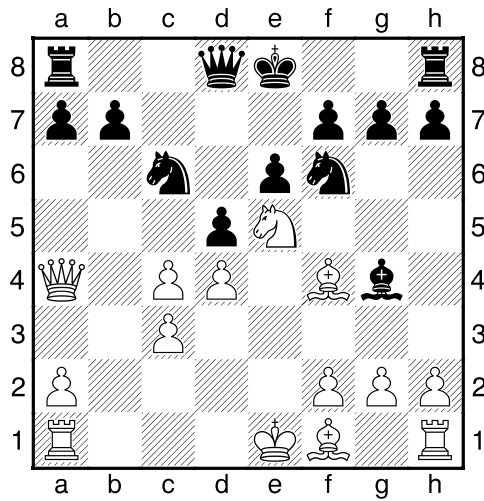


]

[7...Pc6 8.c5<sup>3</sup>]

**8.Da4+= Pc6** [Wit heeft een zeer actieve stelling]

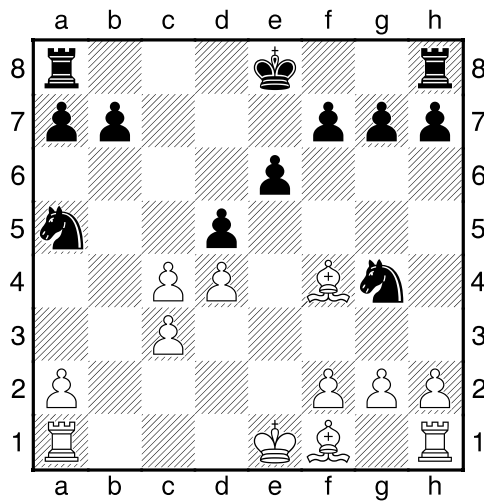
**9.Pe5 Lxc3+ 10.bxc3** [Diagram



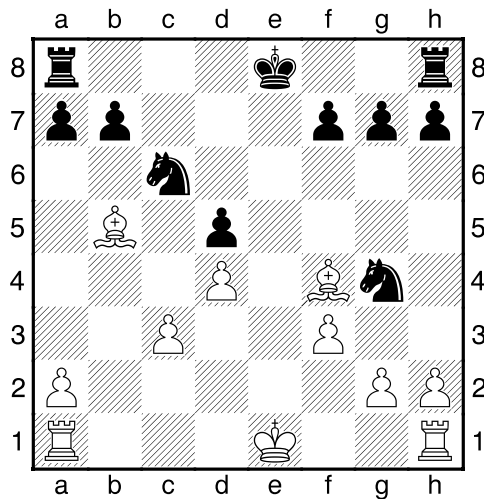
]

10...Da5 [10...0-0!? Is de kritieke voortzetting. 11.Pxc6 bxc6=]

11.Dxa5± Pxa5 12.Pxg4 Pxg4 [Diagram

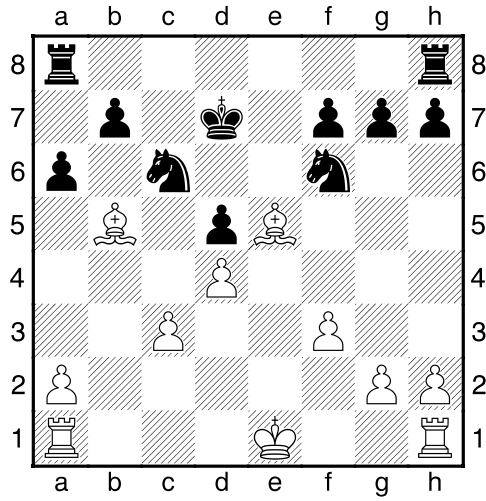


13.cxd5 exd5 14.Lb5+ Pc6 15.f3 [Diagram



]

15...Pf6 16.Ld6 Kd7 17.Le5 a6 [Diagram



]

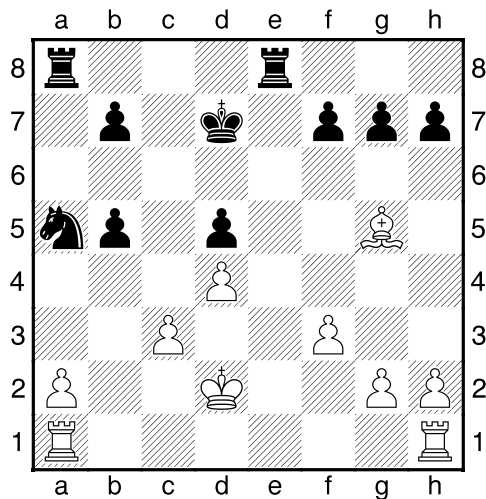
18.Lxf6?? [Geeft de tegenstander nieuwe kansen.]

[<sup>1</sup>18.Le2<sup>2</sup> En wit haalt alles uit de kast.]

18...axb5<sup>μ</sup> 19.Lg5 The8+ [19...Ta3 20.Ld2<sup>μ</sup>]

20.Kd2 [20.Kf2 Ta3 21.Thb1 Txc3 22.Txb5 Tc2+ 23.Kf1 Tee2<sup>3</sup>]

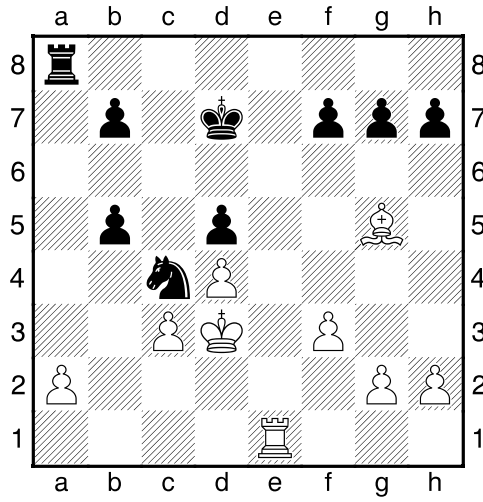
20...Pa5 [Diagram



]

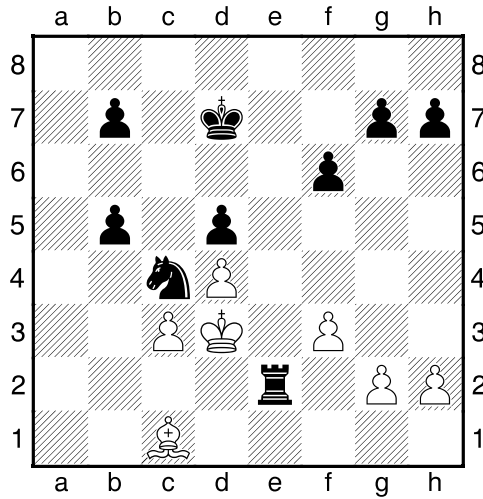
[20...f6!?<sup>1</sup> 21.Lf4 Ta3 22.h4<sup>μ</sup>]

21.The1 Pc4+ 22.Kd3 Txe1 23.Txe1 [Diagram



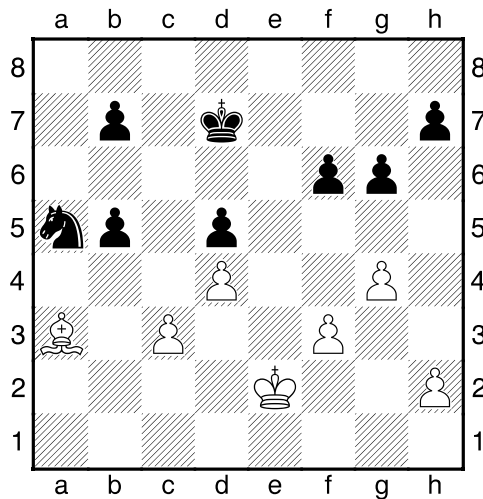
]

23...f6 24.Lc1 Txa2 25.Te2 Txe2 [Diagram



[25...Ta4 26.h4μ]

26.Kxe2 g6 27.g4 Pa5 28.La3 [Diagram



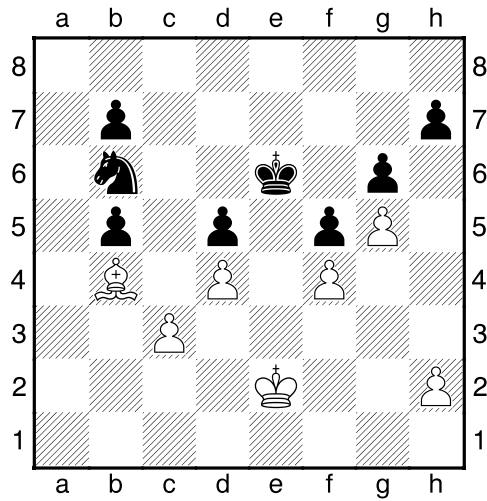
]

**28...Pc4** [Zwart dreigt met materiaalwinst: Pc4xa3]

**29.Lb4** [Een riante positie voor de witte loper.]

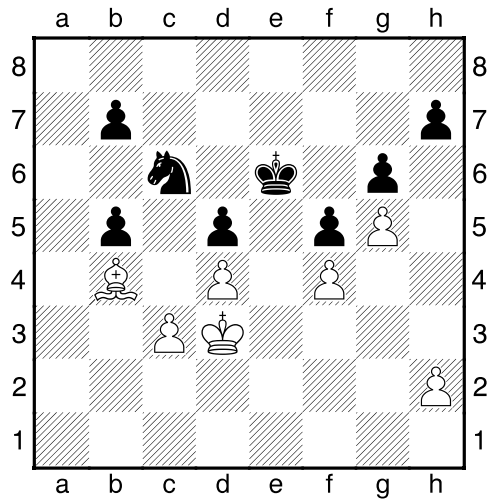
[29.Lc1 Ke7 30.h4μ]

**29...Ke6 30.f4 f5 31.g5 Pb6** [Diagram



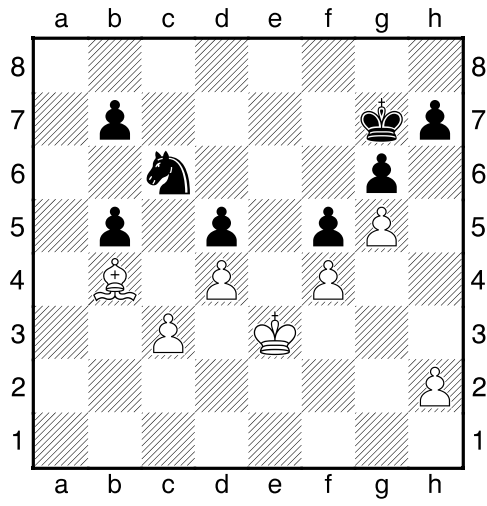
]

**32.Kd3 Pd7 33.Ke3 Pb8 34.Kd3 Pc6** [Diagram



]

**35.Ke3 Kf7 36.Kd3 Kg7 37.Ke3** [Diagram



]

$\frac{1}{2}-\frac{1}{2}$