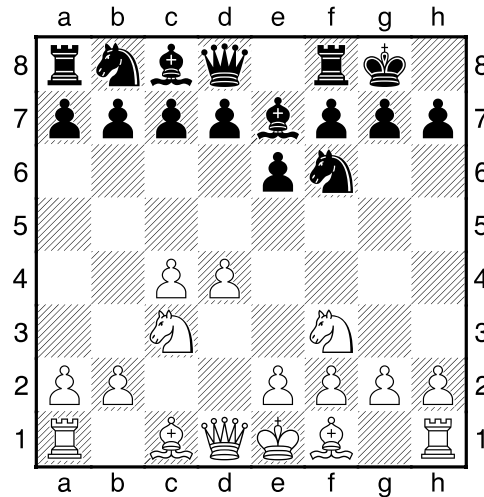


(95) Frans ,Hanssen - Theo,Verstappen [A18]

Intern GESS, 18.11.2019
[Deep Fritz 14 x64 (15m)]

[A18: Engelse Opening: Flohr-Mikenas Systeem (1 c4 Pf6 2 Pc3 e6 3 e4)]

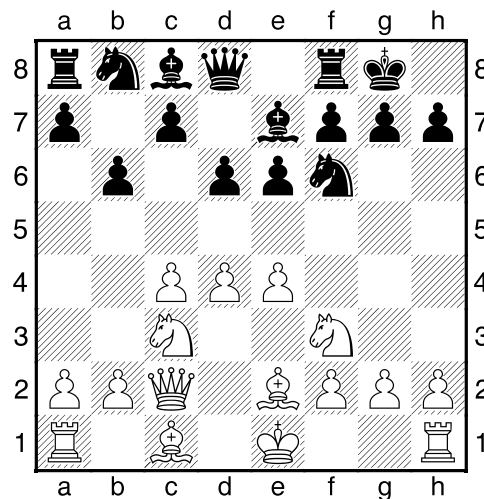
1.d4 Pf6 2.Pf3 e6 3.c4 Le7 4.Pc3 0-0 [Diagram



]

5.e4 d6 6.Le2 [laatste zet uit boek]

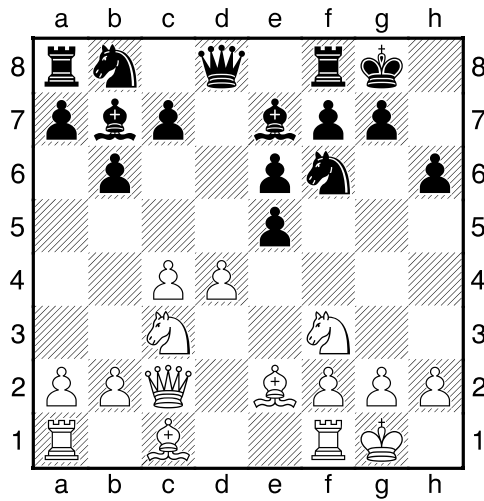
6...b6 7.Dc2 [Diagram



]

7...Lb7 8.0-0 h6 [Dekt g5]

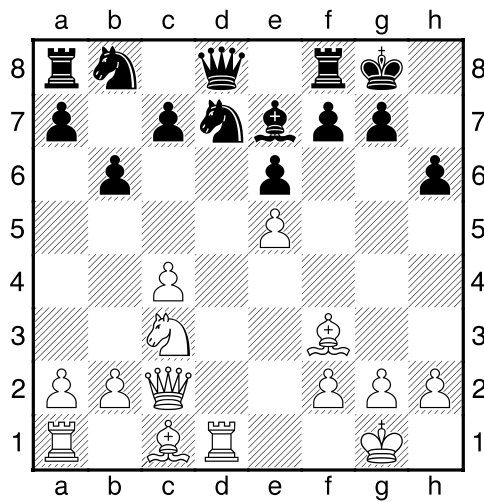
9.e5 dxe5 [Diagram



]

10.dxe5 Pfd7 11.Td1 Lxf3 [11...Pc6!?² Is een nadere analyse waard.]

12.Lxf3± [Diagram



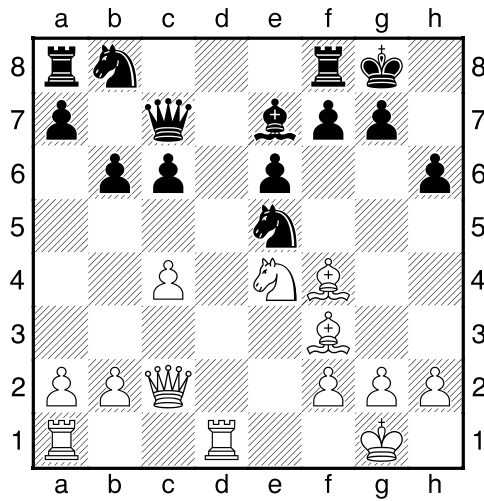
]

12...c6 13.Pe4 [Zwart's positie is in het nauw]

[¹13.De2!/?±]

13...Dc7= [Zwart dreigt met materiaalwinst: Dc7xe5]

14.Lf4 Pxe5 [Diagram

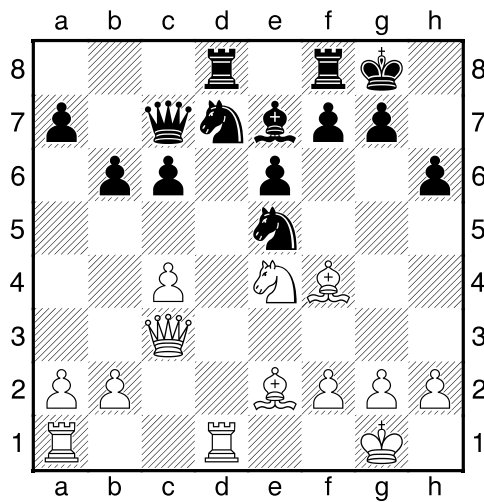


]

15.Dc3 Pbd7 [Wit heeft een actieve stelling]

16.Le2 [Wit heeft een zeer actieve stelling]

16...Tad8 [Diagram



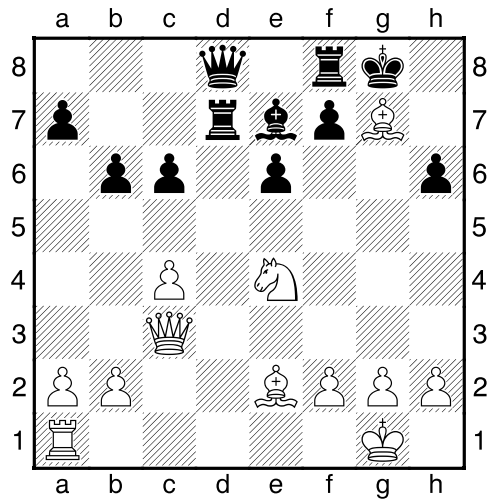
]

[16...f6 17.Td2=]

17.Txd7 [¹17.Dg3 f5 18.Txd7 Dxd7 19.Lxe5±]

17...Txd7?? [¹17...Dxd7 Was de enige mogelijkheid de strijd gaande te houden. 18.Lxe5 f6=]

18.Lxe5+– Dd8 19.Lxg7 [Diagram



]

[19.Lxg7 f5 20.Lxf8 Dxf8 21.De5+–]

1–0