

**(60) Bert, Gerards - Theo, Verstappen [C13]**

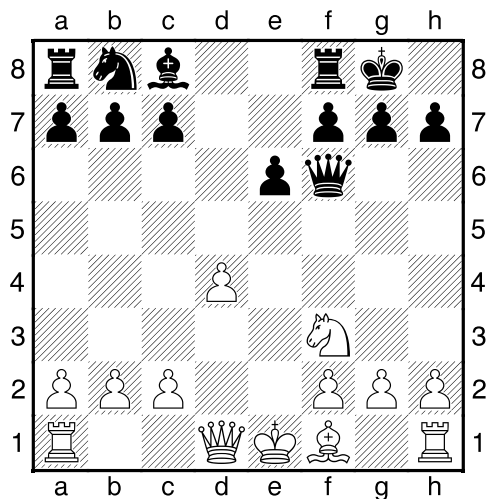
Intern GESS Sittard, 26.06.2017

[Deep Fritz 14 x64 (15m)]

[300MB, Fritz 14.ctg, DESKTOP-VC3PI6K]

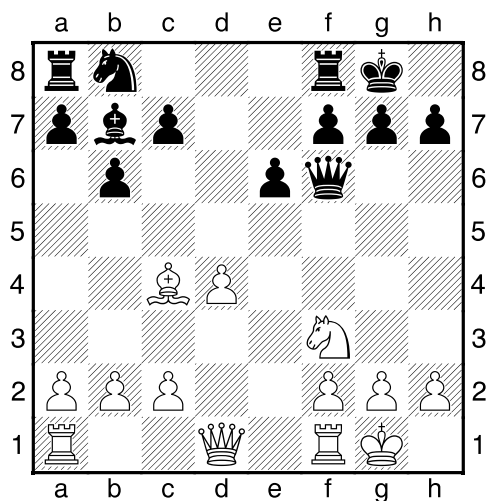
1.e4 [1.Pf30]

1...e6 2.d4 d5 3.Pd2 dxe4 4.Pxe4 Pf6 5.Lg5 Le7 6.Pxf6+ Lxf6 7.Lxf6 Dxf6 8.Pf3 0-0 [Diagram



laatste zet uit boek]

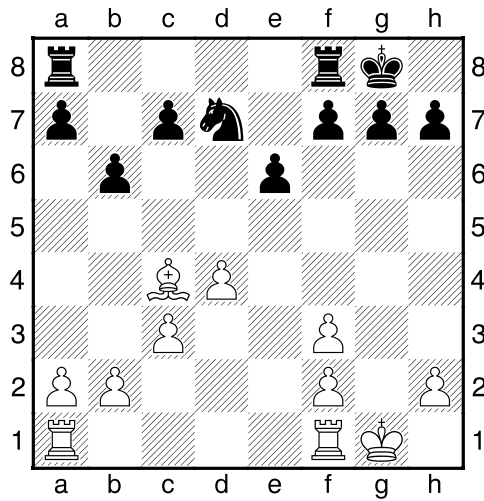
9.Lc4 b6 10.0-0 Lb7 [Diagram



]

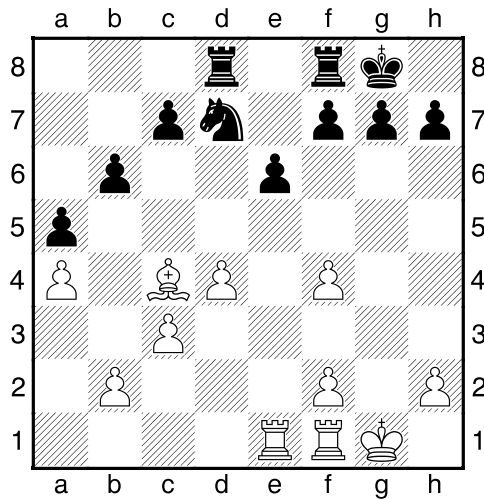
11.c3 [11.Pe5!?=]

11...Lxf3 12.Dxf3 Dxf3 13.gxf3 Pd7 [Diagram



]

14.a4 a5 15.Tae1 Tad8 16.f4 [Diagram



]

16...Pf6 [16...g6 17.Kg2μ]

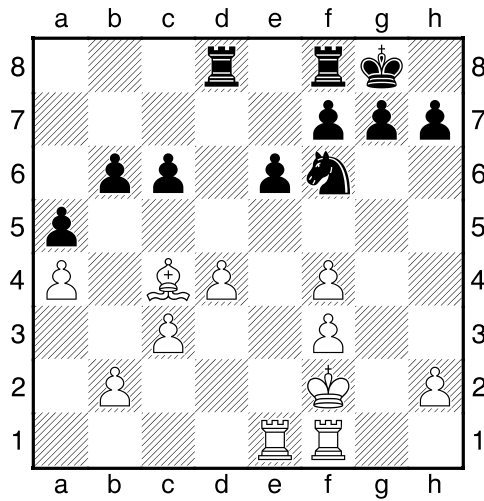
17.f3 [Beheerst e4+g4]

[17.f5 exf5 18.Te7 Tc8=]

17...c6 [Dekt b5+d5]

[17...g6 18.Kf2μ]

18.Kf2 [Diagram



]

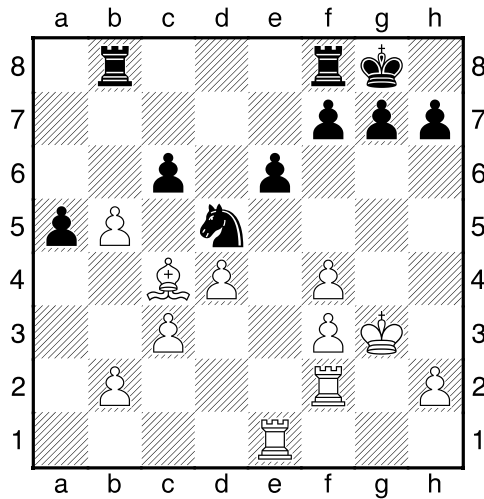
18...Pd5 [Zwart dreigt met materiaalwinst: Pd5xf4]

19.Kg3 Tb8 [19...Pe7 20.h4³]

20.Tf2 [20.f5 exf5 21.Lxd5 cxd5=]

20...b5 [¹20...g6!²µ]

21.axb5= [Diagram



]

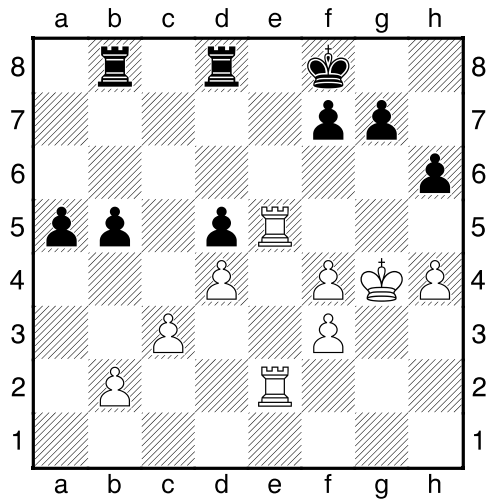
21...cxb5 22.Lxd5 exd5 [Een dubbele toren eindspel ontstaat. ]

23.Te5 [Wit dreigt met materiaalwinst: Te5xd5]

23...Tfd8 24.Tfe2 h6 [24...Kf8 25.f5³]

25.h4 [25.Te7!²² Is een interessant alternatief.]

25...Kf8 26.Kg4 [Diagram

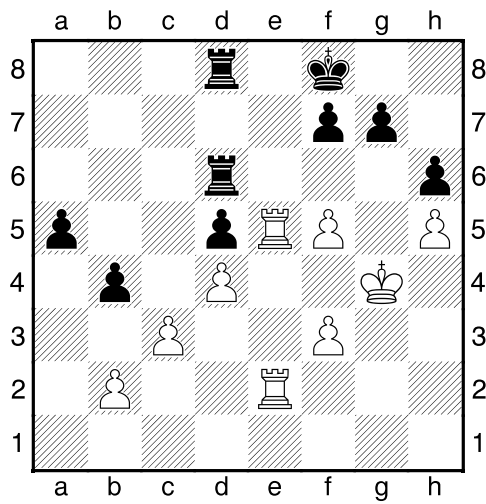


]

**26...Tb6** [26...b4 27.Te7<sup>3</sup>]

**27.h5** [27.Te7 Tg6+ 28.Kh3 Tf6=]

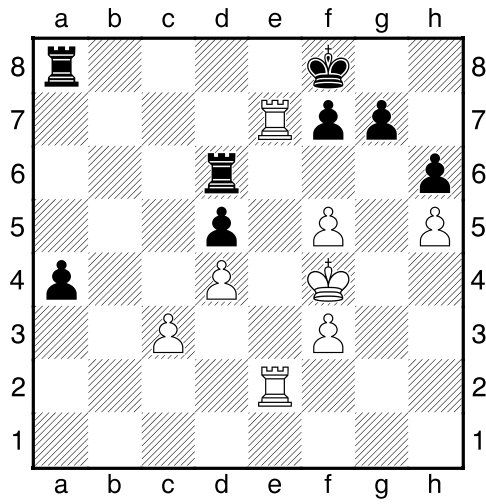
**27...Tbd6 28.f5 b4** [Diagram



Zwart wint ruimte.]

[28...T6d7 29.Te1=]

**29.Kf4 bxc3 30.bxc3 a4 31.Te7 Ta8** [Diagram



]

**32.Tb2??** [Geeft de zekere winst uit handen.]

[!32.Tb7= Is nog net speelbaar.]

**32...Kxe7+**

**0-1**