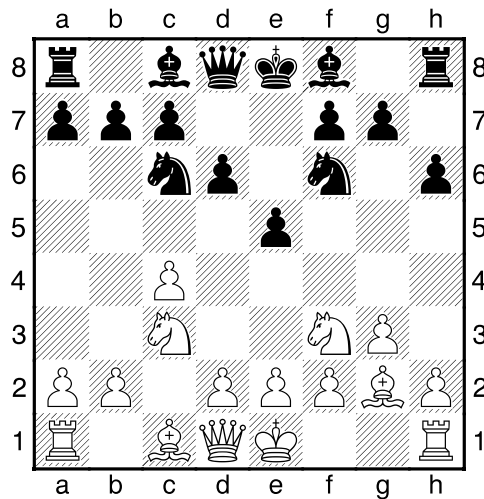


**(19) Theo,Verstappen - Peter,Claes [A29]**

Intern GESS, 12.03.2018  
[Deep Fritz 14 x64 (15m)]

[A29: Engelse Opening: Vier Paarden Variant met 4 g3]

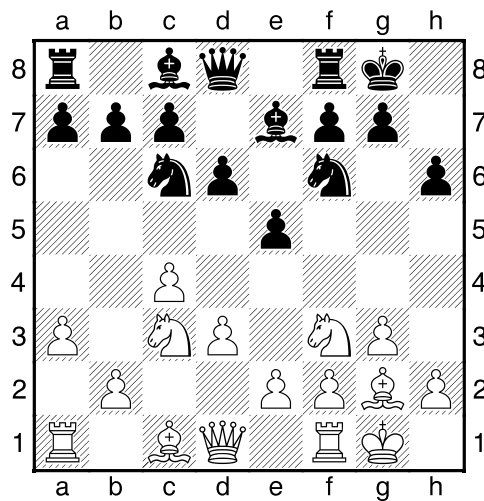
1.c4 e5 2.Pc3 Pf6 3.g3 Pc6 4.Lg2 d6 5.Pf3 h6 [Diagram



laatste zet uit boek]

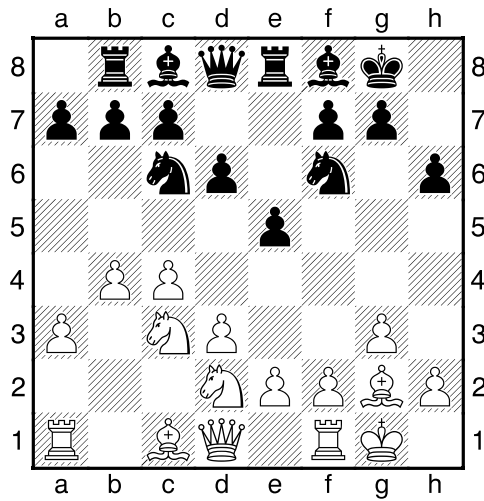
6.d3 [Controleert e4]

6...Le7 7.0-0 0-0 8.a3 [Diagram

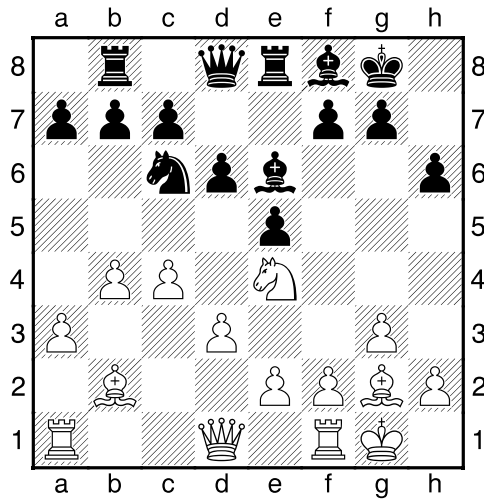


Zekert b4]

8...Te8 9.b4 Lf8 10.Pd2 Tb8 [Diagram



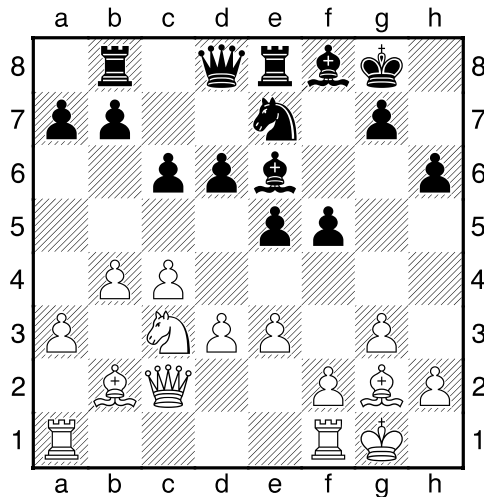
11.Pde4 Pxe4 12.Pxe4 Le6 13.Lb2 [Diagram]



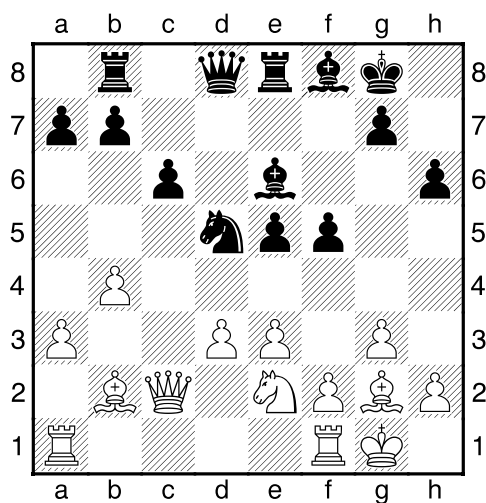
13...f5 [Zwart dreigt met materiaalwinst: f5xe4]

14.Pc3 Pe7 15.e3 c6 [Beheerst b5+d5]

16.Dc2 [Diagram]



16...d5 17.cxd5 Pxd5 18.Pe2 [Diagram

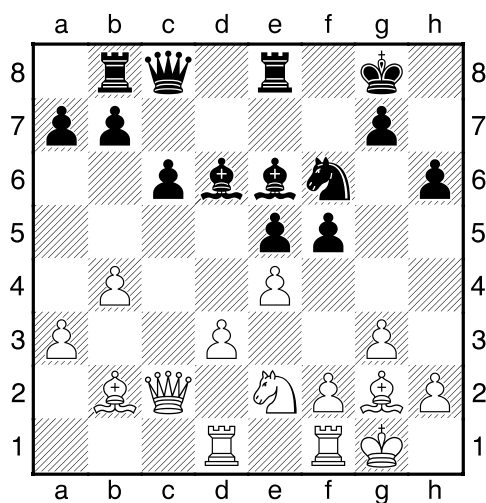


]

[18.Pxd5 Lxd5 19.e4 fxe4 20.dxe4 Lf7<sup>2</sup>]

18...Ld6 19.Tad1 Dc8 [19...Dc7!?= Is een interessant alternatief.]

20.e4<sup>2</sup> Pf6 [Diagram

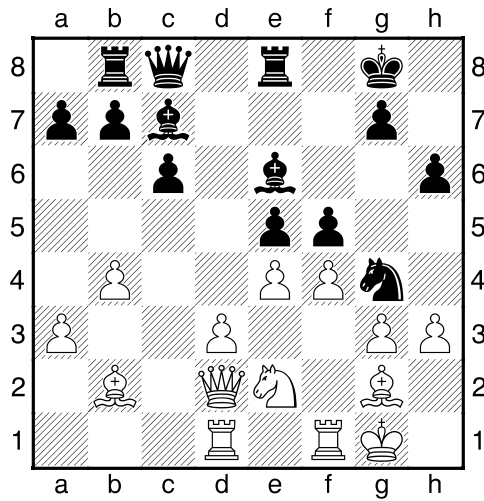


]

21.f4 [21.d4!? Is een nadere analyse waard. 21...Lf7 22.dxe5 Lxe5 23.Lxe5 Txe5 24.f4 Txe4 25.Lxe4 fxe4 26.Pd4<sup>2</sup>]

21...Pg4= 22.Dd2 Lc7 [22...fxe4!? Is misschien sterker. 23.dxe4 Td8=]

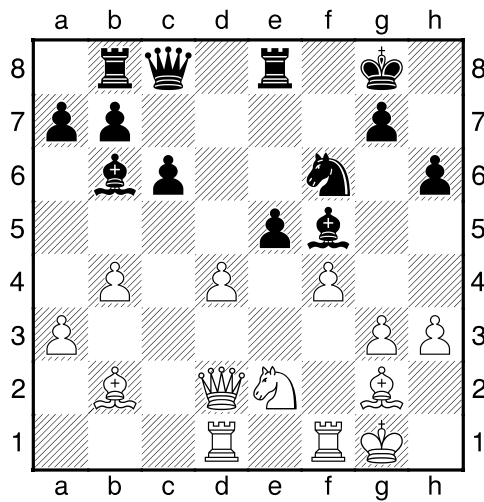
23.h3<sup>2</sup> [Diagram



Wit dreigt met materiaalwinst: h3xg4]

23...Lb6+ 24.d4 Pf6 25.exf5 [25.fxe5!? Ziet er speelbaar uit. 25...Pxe4 26.Dd3?]

25...Lxf5= [Diagram



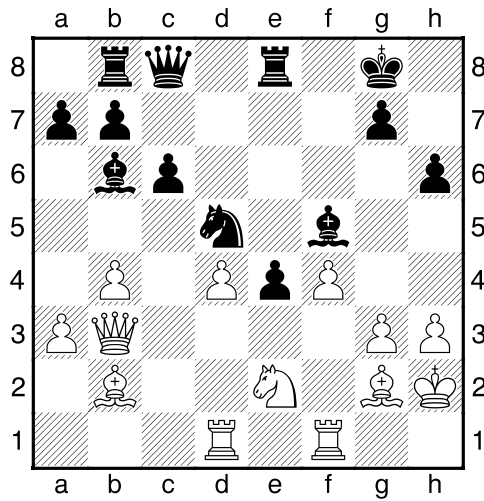
]

26.Kh2 [26.g4 Le4=]

26...e4<sup>3</sup> [Zwart heeft een nieuwe gepasseerde pion: e4]

27.De3 [27.Pc3!/?<sup>3</sup>]

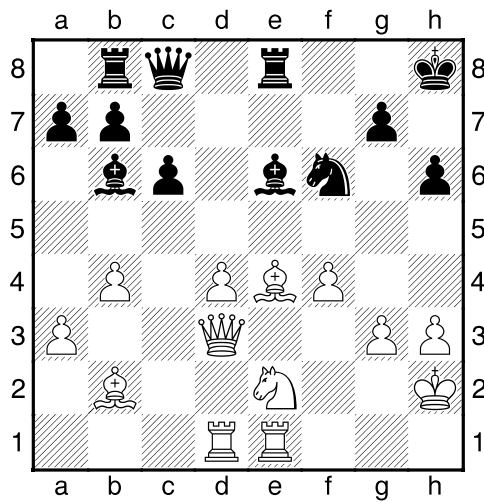
27...Pd5<sup>μ</sup> 28.Db3 [Diagram



]

28...Kh8 29.Tfe1 Le6 30.Lxe4 Pf6 [Zwart dreigt met materiaalwinst: Pf6xe4]

31.Dd3? [Diagram



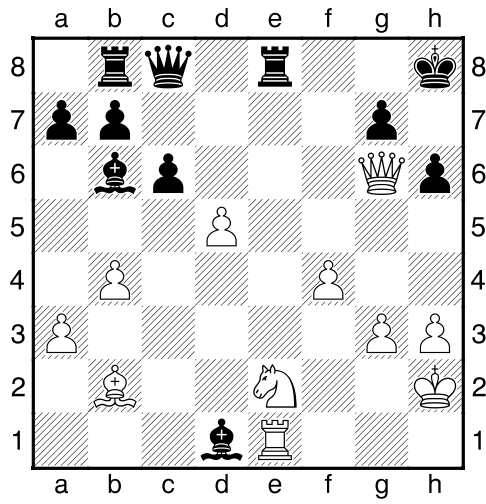
]

[!31.d5!? Houdt de strijd gaande. 31...Lxh3 32.Lxf6 Txe4 33.Df3μ]

31...Pxe4μ 32.Dxe4 Lb3 33.Dg6?? [wit stort in.]

[!33.Dg2 Lxd1 34.Txd1μ]

33...Lxd1→+ 34.d5 [Diagram



]

34...Tg8 [134...Dd7 Beslist de partij meteen. 35.Le5 Txe5 36.fxe5 Dxd5--]

35.Dxh6#

1-0