

**(59) Theo,Verstappen - Harold,de Goey [A21]**

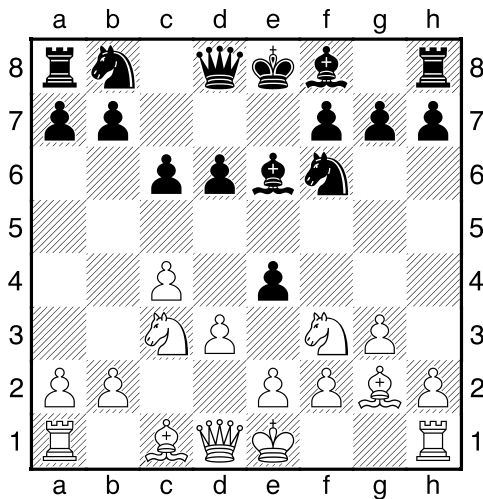
Extern (EWS-GESS 1), 26.04.2015

[Deep Fritz 14 x64 (15m)]

[A21: Engelse Opening: 1...e5 2 Pc3]

**1.c4 e5 2.Pc3 d6 3.g3 Pf6 4.Lg2 c6 5.d3 Le6 6.Pf3** [laatste zet uit boek]

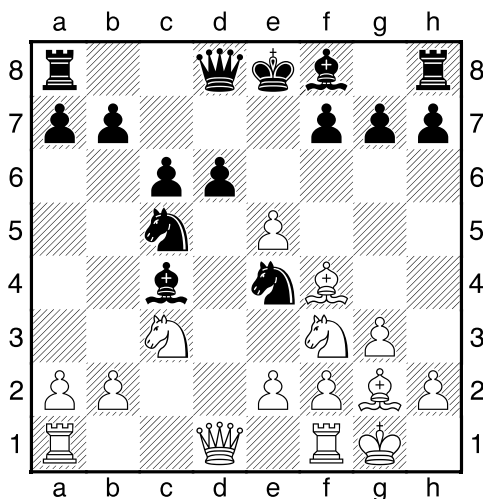
**6...e4** [Diagram ]



[6...h6!?= Moet onderzocht worden.]

**7.dxe4± Lxc4** [Wit heeft nieuwe dubbele pionnen: e2+e4]

**8.0-0 Pbd7 9.Lf4 Pc5 10.e5 Pfe4?** [Diagram ]



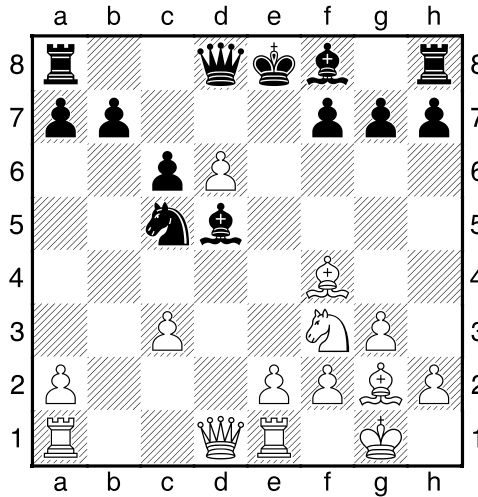
[10...dxe5!? Vraagt om nadere analyse. 11.Pxe5 Ld5±]

**11.exd6** [11.Pxe4 Pxe4 12.exd6 Lxd6+]

**11...Pxc3?** [11...Pxd6!? 12.Pe5 Tc8±]

**12.bxc3+ Ld5** [12...Le6 13.Dd4 Da5 14.Tab1+]

**13.Te1** [Diagram ]

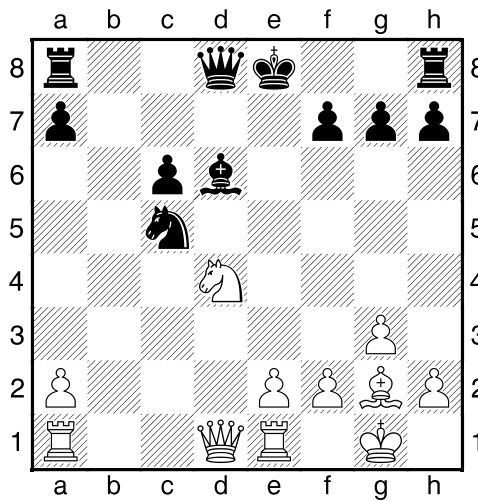


[13.c4 Geeft de tegenstander geen kans. 13...Lxf3 14.exf3 Pe6+]

**13...Lxd6?** [13...Da5 14.Pe5 Lxd6 15.e4+]

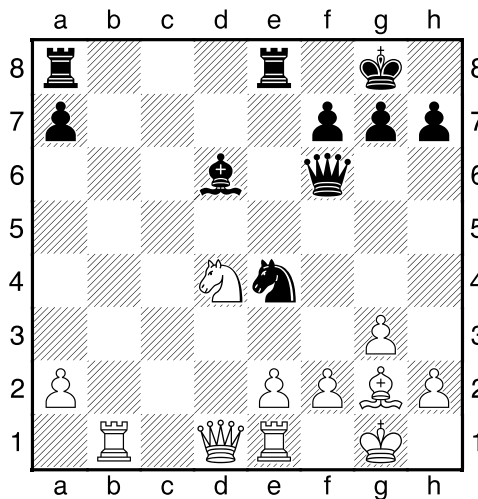
**14.c4** [14.Lxd6 Beslist de partij meteen. 14...Dxd6 15.e4+]

**14...Lxf4± 15.cxd5 Ld6 16.dxc6 bxc6 17.Pd4** [Diagram



**17...0-0 18.Pxc6 Df6 19.Tb1 Tfe8 20.Pd4** [20.e3!? Lf8+]

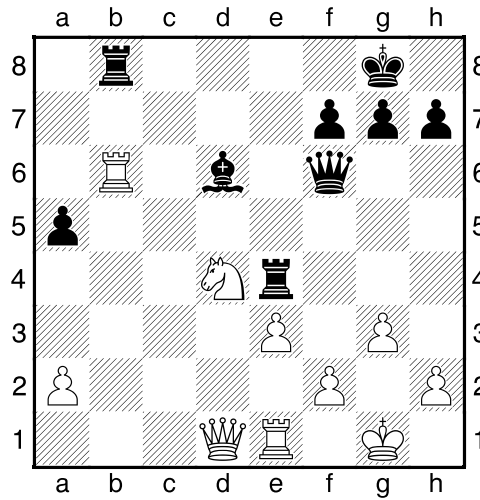
**20...Pe4** [Diagram ]



[20...Tad8 21.e3±]

21.Lxe4 Txe4 22.e3 a5 [22...Lc5 23.Df3 Dxf3 24.Pxf3±]

23.Tb6 Tb8 [Diagram ]



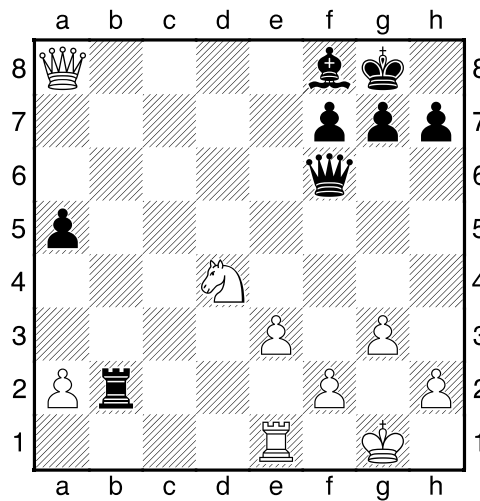
[23...Dd8 24.Db1 Txd4 25.exd4 Lb4 26.Txb4 axb4 27.Dxb4 Txa2±]

24.Dc2 [Wit dreigt met materiaalwinst: Dc2xe4]

[!24.Txb8+ Lxb8 25.Da4+—]

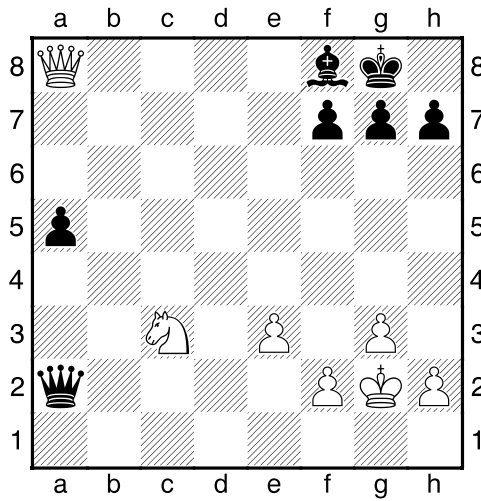
24...Txb6<sup>2</sup> 25.Dxe4 Tb2 26.Da8+ [26.Tf1!±]

26...Lf8= [Diagram



27.Te2 Txe2 [Black has a mate threat]

28.Pxe2 Da1+ 29.Kg2 Dxa2 30.Pc3 [Diagram ]

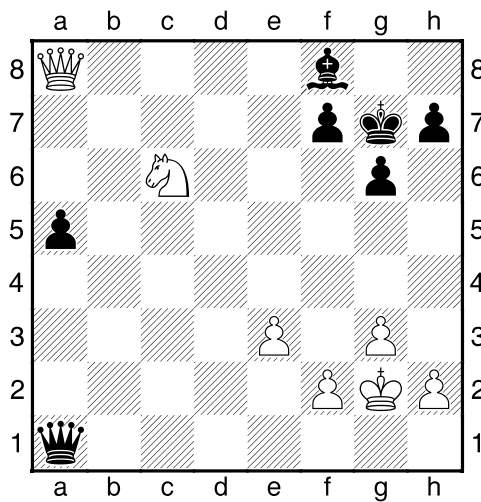


[Wit dreigt met materiaalwinst: Pc3xa2]

**30...Da1** [Zwart dreigt met materiaalwinst: Da1xc3]

**31.Pd5 g6 32.Pe7+** [32.Pb6!? Is misschien sterker. 32...Kg7 33.Pd7=]

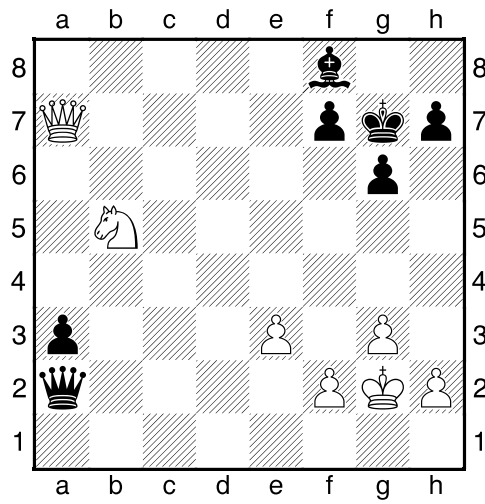
**32...Kg7 33.Pc6?** [Diagram



[33.Pd5]

**33...a4→ 34.Da7** [34.Da5 a3→+]

34...a3 35.Pd4 Da2 36.Pb5 [Diagram ]



[36.Dd7→]

36...Dd5+ [36...Dd5+ 37.e4 Dxe4+ 38.Kg1 Db1+ 39.Kg2 a2→]

0-1